



Africa Travel Bureau | Profile

33 years of exceptional services
Erlesene Safaris & Spezialist Fuer Kleingruppen Reisen in Tansania

Director's Message



Welcome to the Africa Travel Bureau!

At Africa Travel Bureau, we specialize in creating exceptional travel experiences that highlight the vibrant beauty and diverse landscapes of Africa. As a reputable travel agency, we are proud to offer premium journeys that take our clients deep into the heart of East Africa. Whether you seek an exhilarating safari, a relaxing beach retreat, or an immersion in the rich cultures of Africa, we are here to craft bespoke itineraries that align with your distinct desires and aspirations.

Over the past year, our primary focus has been on expanding our market reach and increasing valuable partnerships. We are thrilled to have achieved 90% of our growth targets, including building connections with esteemed new partners such as Wildlife Safari Kenya and TCS World Travel. This achievement reflects the dedication and hard work of our team, and the strong relationships we've nurtured within the travel industry.

As we move into the new year, our focus remains the same: continued growth and expansion without compromising the exceptional quality we are known for. We are committed to identifying new opportunities, refining our offerings, and strengthening our partnerships to continually enhance the experiences we deliver to our clients. With our extensive expertise, we ensure every journey of our clients, showcases the very best of Africa—its breathtaking landscapes, rich heritage, and renowned hospitality.

Thank you for choosing Africa Travel Bureau. We look forward to working with you and helping you create unforgettable memories that will last a lifetime.

Joseph Solomon
Director, Africa Travel Bureau.

Copyright @ 2025



Table of Content

Our Roots	7
Founder's Legacy & Leadership	7
Our offerings	8
Our Promise	8
Why we believe in ourselves	9
.....	10
Our team	11
Joseph Solomon -Director.....	11
Paul Solomon - Finance & Product Director.....	12
Office Team	13
Guides	13
Our Vehicles	16
Practical Information.....	19
Best Time to Visit Tanzania	19
The Star Months: June to October & December to February.....	19
The Green & Quieter Seasons: March, April, May & November.....	20
Dry Season Highlights (Jan–Feb, Jun–Oct, Late Dec).....	21
Wet Season Highlights (Mar–May, Nov, Early Dec)	21
Tourism Seasons in Tanzania.....	22
Experience the Great Migration Year-Round	22
Tanzania Weather Guide.....	22
Tanzania's Climate by Region	23
The Seasons of Tanzania.....	23
Safaris in the Rainy Season	24

Wildlife & Weather Connection	24
Travel Insurance for Tanzania & Zanzibar	25
Why Travel Insurance Matters	25
Tanzania Travel Advice.....	26
Is Tanzania Safe to Travel?	26
Population & Culture	26
Visa Requirements for Tanzania	27
Passport Requirements	27
Vaccinations & Health	27
Time Zone in Tanzania.....	27
Currency	28
Language	28
Tanzania Yellow Fever Requirements	28
Do I Need a Yellow Fever Vaccination for Tanzania?.....	28
When Is Proof of Vaccination Required?.....	29
About Yellow Fever	29
Receiving the Vaccine	29
Medical Exemptions.....	29
ATB Travel Advice.....	29
How to Get Your Visa for Tanzania	30
Tanzania Visa Costs	30
Option 1: Apply for Your Visa Online (Recommended).....	30
Option 2: Apply for a Visa on Arrival.....	31
Which Should You Choose?	31
Important Notes	31
ATB Travel Tip.....	32

Flying Doctors Services in East Africa	32
How Flying Doctors Work	32
Real-Life Scenarios	32
Important Limitations.....	33
Why It Matters	33
Scheduled Group Tours.....	34
Tanzania Northern Highlights (TNH).....	35
Kenya Tanzania Highlights (KTH)	38
Kenya Highlights (KH)	41
Southern Wilderness Classic (SWC).....	43
Private Tours	49
Tanzania Wilderness Highlights	50
Tanzania Wilderness Highlights:.....	52
Tanzania Southern Highlights:.....	54
Tanzania Southern Highlights:.....	55
Cheetah Safari:	56
Wildebeest Safari (WLB):.....	58
Tanzania Migration Classic (TMC):.....	59
Mountain Climbing.....	62
Marangu Route	62
Mount Kilimanjaro Climb.....	62
Machame Route Mount Kilimanjaro Climb	63
Lemosho Route Mount Kilimanjaro Climb.....	65
Rongai Route Mount Kilimanjaro Climb	66
Mount Meru Climb	68
PACK LIST recommendations – Mount Kilimanjaro + Mount Meru	69

Africa Travel Bureau Policies70

Reservations.70

Payment.70

Prices.70

Cancellation Terms and Penalties.....70

Provisional Reservations.71

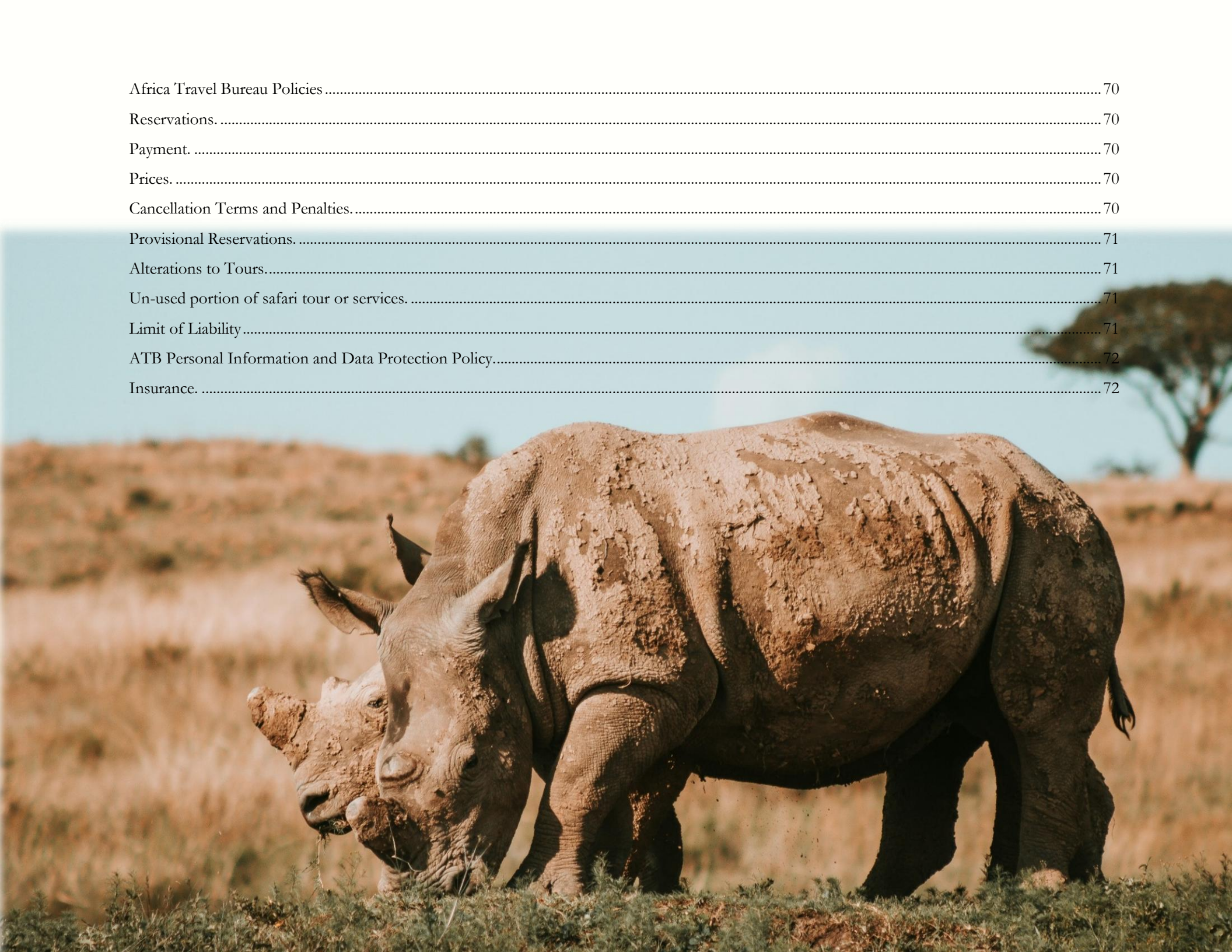
Alterations to Tours.....71

Un-used portion of safari tour or services.71

Limit of Liability71

ATB Personal Information and Data Protection Policy.....72

Insurance.72



Who We Are



Our Roots

Founded in 1985 by Solomon Joseph Daudi and officially launching its operations in 1992, Africa Travel Bureau (ATB) began as a family-owned business known for its personalized service and attention to detail. Over the past three decades, ATB has grown to become one of Tanzania's most trusted and respected tour operators, welcoming visitors from around the world with the commitment to treat every guest as part of the family.

Africa Travel Bureau has maintained its core values while evolving with the dynamic nature of the travel industry. The company remains dedicated to providing efficient and personalized service, which has become synonymous with the Africa Travel Bureau brand. We continually focus on enhancing our workforce by providing training and development, regularly evaluating our offerings, and expanding our fleet of vehicles to ensure the highest quality of service. Furthermore, we are equipped with state-of-the-art communication tools to ensure smooth coordination and operational efficiency.

Africa Travel Bureau holds a Category A license as a fully accredited and licensed tour operator. We are proud members of the Tanzania Association of Tour Operators (TATO) and the Tanzania Tourist Board (TTB), which reflect our standing in the industry. As the travel industry remains vibrant and ever-changing, Africa Travel Bureau stays at the forefront of trends and shifts, ensuring that our services remain adaptable and forward-thinking.

Our mission is simple: to build upon our legacy of excellence while continually striving to be the leading Destination Management Company in Tanzania. Since our inception, Africa Travel Bureau has successfully catered to thousands of clients worldwide, offering a range of tailored services from budget to luxury safaris, with customized itineraries designed to meet the unique needs of each traveler.

Founder's Legacy & Leadership

The foundation of Africa Travel Bureau is rooted in the vision and determination of its co-founder, Solomon Daudi, who brought decades of invaluable experience to the tourism industry. Before launching Africa Travel Bureau, Solomon spent seventeen years as the Managing Director of a chain of government-owned safari hotels and lodges in northern Tanzania. His deep knowledge of the industry, combined with his vast network of global connections, provided the ideal groundwork for building a company committed to excellence.

In 1992, Solomon's entrepreneurial spirit and dedication to the tourism industry led him to retire from his position in the government-owned hotel sector and embark on his dream of establishing his own travel agency. His wife, an experienced accountant at a safari hotel in Arusha, joined him in the venture,



contributing her expertise to the company's success. Together, they built a business known for its integrity and strong partnerships with renowned agents across the globe.

Today, Africa Travel Bureau thrives under the leadership of Solomon's children. Dr. Joseph Solomon and CPA-T Paul Solomon, his sons, now oversee the company's day-to-day operations, continuing their father's legacy with a focus on excellence and customer satisfaction. Dr. Eva Solomon, Ms. Esther Solomon, and Ms. Salome Solomon, other members of the Solomon family, also play key roles within the company, contributing their skills and expertise to support Africa Travel Bureau's continued growth and success.

With an unwavering commitment to providing exceptional service and an extensive history in the Tanzanian tourism industry, Africa Travel Bureau remains a trusted partner for travelers seeking authentic African safari experiences



Our offerings

Africa Travel bureau has in-depth experience in selling destination of Tanzania, Kenya, Uganda and now we have opened up to the destination Rwanda. For a number of years we have carefully planned safari adventures of different categories either pre-planned or tailor made based on our client's needs. Africa Travel bureau sell safari packages including; Road safaris (Private Tours and Group Safari (weekly departures), Group escorted Safaris (New), Vegan Safaris, Mobile Camping Safaris, Fly in Safaris, Chimpanzee Trekking, Cultural Tourism Safaris, Mountain Climbing (Mount Kilimanjaro, Mount Meru, Oldonyo Lengai), Beach Holidays

Our Promise

We believe that East Africa offers the most extraordinary array and concentration of wildlife in Africa; it also has some of the world's warmest and friendliest people. We also believe that when done properly tourism has a positive impact on the wildlife, the environment and the people. We further do believe that the co-founder, the late Solomon Joseph Daudi focused to ensure the company strives to provide quality services, with honesty and high integrity. For this case, Africa Travel Bureau promises to :

1. Treat the Tanzanian wildlife and environment with care and respect.
2. Support local development and encourage the use of resources and activities that support the local economy.
3. Provide honest advice, fair prices and quality services to all our customers.

Why we believe in ourselves

1. Safaris of Distinction: Over 30 years of experience in planning safari holidays.
2. Every detail matters to us: Everything matters to us – big or small – to guarantee a flawless service.
3. Best rates and instant availability: Is the hallmark of our services and our pledge to our clients.
4. We offer a wide range of services: Africa Travel Bureau has a wide selection of services, created through extensive research and designed to suit different budgets and style. We regularly inspect the accommodations we offer our clients in the different locations to ensure consistency and quality.
5. Professional guides and custom made vehicles: Africa Travel Bureau has highly professional guides and maintain a fleet of new vehicles customized for maximum comfort and safety while on safari. Having permanently employed guides and full ownership of fleet gives us full control over quality, service and price.
6. Responsible Tourism: Africa Travel Bureau adheres to the principles of responsible tourism by ensuring preservation of the environment through strict adherence to rules and regulations laid down to protect the national parks and reserves. We also give back to our local communities, delivered through sustainable practices.
7. We are there from the start to finish: From the moment you first contact us to plan your safari holiday, until your return back home, we are there for our clients, providing full support, and free of any charge. Prompt e-mail responses; accurate information to ensure the most appropriate travel arrangements and best possible value to our clients. Our team is trained and experienced to provide a friendly service with the goal of customer satisfaction. That a significant number of our clients are repeat as well as from word of mouth recommendation – is true testimony of our unparalleled customer care approach.
8. Genuine Value for Money: Is a prominent USP (unique selling point) that we pride ourselves in. We don't simply sell you a holiday – we also ensure you receive the best possible value by using our expertise and experience in helping you plan your safari holiday in the most price efficient manner.
9. We are Transparent, Accountable and Responsible: At Africa Travel Bureau, what you see is what you get, and sometimes more. There are no hidden costs after the purchase of the tour. Typically our prices include, but not limited to, all airport transfers; ground transportation costs; all accommodations; most meals; park entry fees; refreshments in the vehicle while on safari; driver/guide fees; all local flights, wherever applicable; and medical emergency evacuation insurance. On booking a safari holiday with Africa Travel Bureau, we guarantee your peace of mind and maximum enjoyment.



Our team

Our policy is to employ those with the potential to be the best, in terms of performance and discipline. The driver-guides are all handpicked, and are continually under training in clients' safety, nature interpretation, general knowledge, and foreign languages, including English, French, and German, Africa Travel Bureau is constantly investing in human resource and product development, for we know it is in our interest as well as our duty to ensure that all our guests go back home happy and satisfied with our arrangements. Only this way would they be our good ambassadors to others and come back to us again. Normally short courses are conducted during the low season months of March, April and May to develop extra knowledge to our guides.



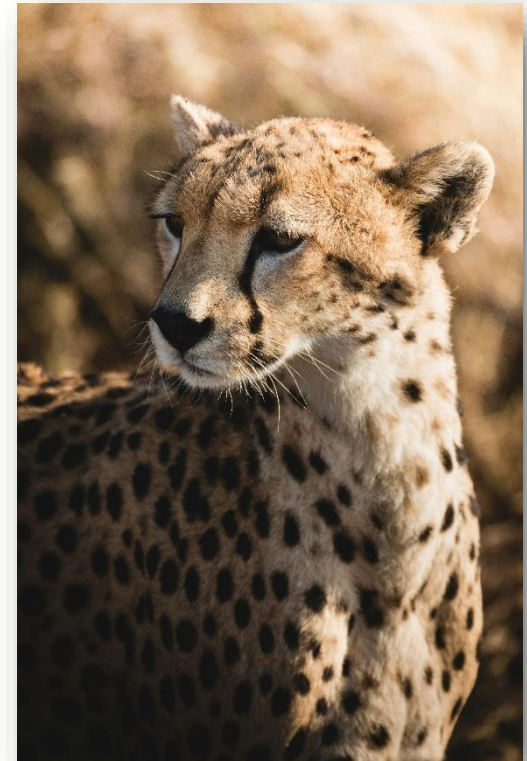
Joseph Solomon -Director

Dr. Joseph Solomon brings over two decades of experience in the tourism industry to his role as Director. Since joining the company in 1998, Dr. Solomon has been a key driver in the agency's success and growth, shaping its operations, expanding its market presence, and ensuring exceptional service delivery to clients.

Starting with hands-on involvement in managing the company's vehicle fleet, and overseeing logistics, Dr. Solomon's leadership journey has been defined by his dedication to operational excellence. His close collaboration with guides, crew members, and other staff

helped him gain a deep understanding of the company's infrastructure and the intricacies of delivering unforgettable safari experiences. Over time, his role expanded, and he assumed responsibility for the strategic direction and overall management of the agency.

Dr. Solomon holds a PhD in Information Sciences, a Master's degree in Business Administration with a focus on Information Technology, a Bachelor's degree in Information Management, and a Diploma in Tourism and Hospitality Management. This diverse academic background, coupled with his extensive hands-on experience, provides him with a comprehensive understanding of both the technical and operational aspects of the tourism industry. His unique combination of skills in management, technology, and tourism allows him to drive efficiency, implement innovative solutions, and elevate the agency's service offerings.



Throughout his tenure, Dr. Solomon has been instrumental in building strong partnerships with key industry stakeholders, expanding the agency's portfolio, and developing tailor-made itineraries that cater to the evolving needs of travelers. His unwavering focus on maintaining high standards of service, promoting sustainable tourism practices, and fostering customer satisfaction has positioned the company as a trusted and respected player in the industry.



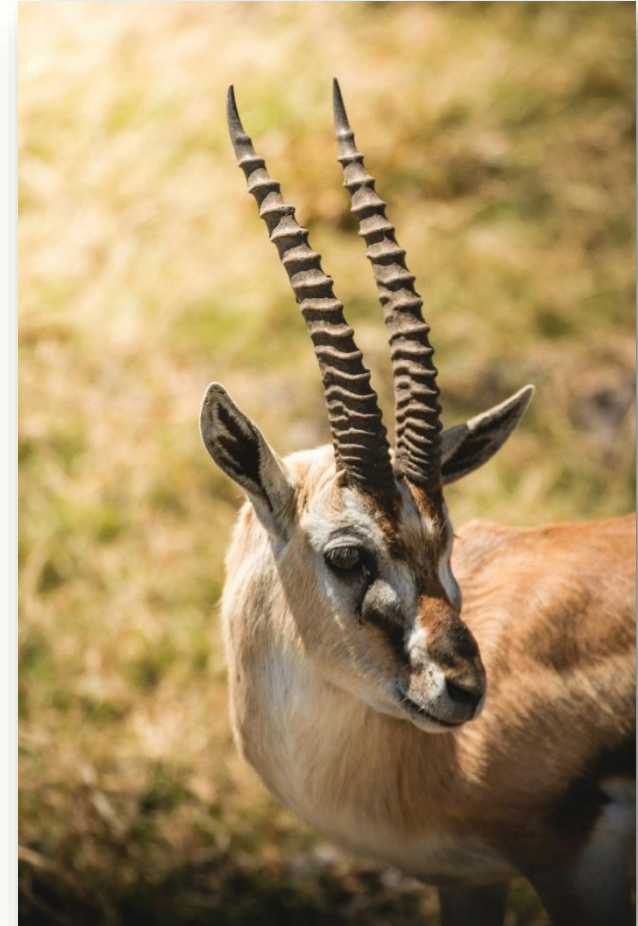
Paul Solomon - Finance & Product Director

Paul Solomon, a highly qualified professional with a Bachelor's and Master's degree in Accountancy, is also a Certified Public Accountant (CPA) and holds a Post-Diploma in Tourism and Hospitality Management. Following in the footsteps of his father and brother, Paul

joined Africa Travel Bureau in 2013 as an accountant and assistant head of operations. He has since played a vital role in the company's growth by overseeing financial management and operations, ensuring that the company consistently delivers top-quality services through a strong focus on best practices.

Paul's expertise as a certified accountant has been instrumental in maintaining the company's financial stability and ensuring compliance with industry regulations. He plays a key role in strategic decision-making, guiding the company's long-term financial strategy and providing leadership in managing finances, maintaining accurate records, and identifying cost-saving opportunities that contribute to the company's overall success.

Since 2019, Paul has also managed the Sales and Marketing department. In this expanded role, he is responsible for overseeing the development and management of competitive itineraries both within Tanzania and beyond. His leadership in the sales department has been crucial in growing the company's sales and expanding its market reach, helping to solidify Africa Travel Bureau as one of the key players in the tourism industry.



Office Team



Ms Caroline (Head Tour Consultant)



Ms Sara (Tour Consultant)



Ms Abigael (Tour Consultant)



Ms Salma (Reservations)



Ms. Rose (Reservations)



Mr. Hamza (Logistics)



Mr. Abdul (Guest Relations)



Mr. Baraka (Guest Relations)



Ms Neema (Senior Accountant)



Mr Mohamed (Head Mechanic)



Mr Moody (Guest Relations)

Guides



Mr. Godwin



Mr. Richard



Mr. David



Mr. William



Mr. Emmanuel



Mr. Komba



Mr. Tiba



Mr. Jephther



Mr. Carlos



Mr. Priscus



Mr. Gideon



Mr. Bonny



Mr. Benny



Mr. Rashid



Mr. Deo



Mr. Chris



Mr. Emma



Mr. Elisante



Mr. Derrick



Mr. Elisha



Our Vehicles





T 340 DLKD



africa[®]
travel
Bureau

Erliesene Safaris & Spezialist fuer
Kleingruppen Reisen in Tansania

www.africatrabelfureau.co.tz



africa[®]
travel
Bureau

Erliesene Safaris & Spezialist fuer
Kleingruppen Reisen in Tansania

www.africatrabelfureau.co.tz



Practical Information

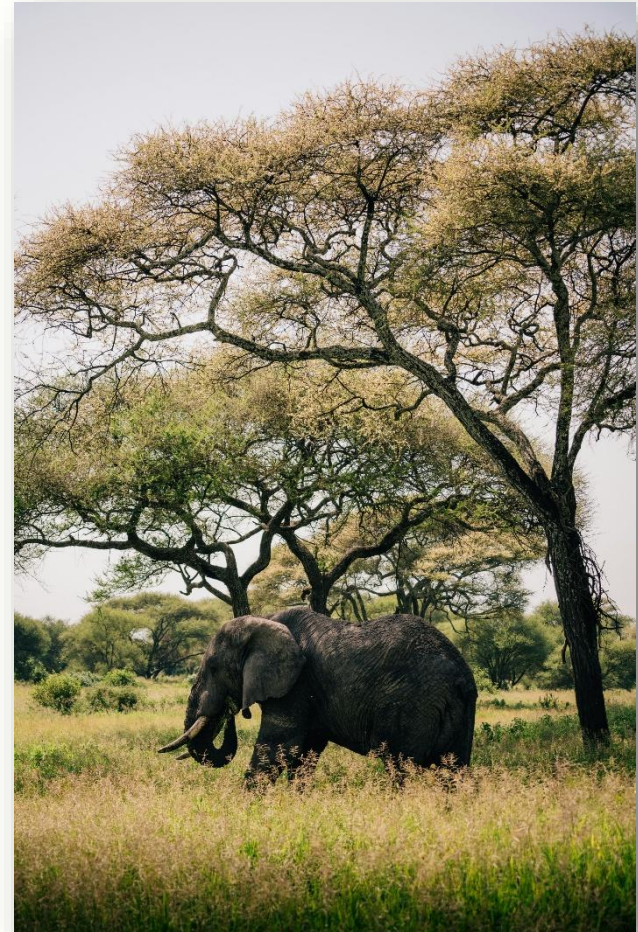
At **Africa Travel Bureau (ATB)**, we are committed to turning your Tanzanian adventure into an unforgettable experience. Whether you dream of exploring the country's iconic national parks, immersing yourself in its vibrant culture, or marvelling at its breath-taking natural beauty, we are here to guide you every step of the way. This travel guide provides you with practical advice for a safe and memorable journey, including important details on yellow fever requirements, local weather conditions, the ideal time to visit, and access to our trusted Flying Doctors Services for emergencies. Beyond travel logistics, we emphasize responsible tourism, encouraging our guests to contribute to the preservation of Tanzania's natural and cultural heritage. With ATB as your trusted partner, your journey will be filled with adventure, discovery, and meaningful connections.

Best Time to Visit Tanzania

At **Africa Travel Bureau (ATB)**, we believe there's no wrong time to experience the magic of Tanzania—every season has its own treasures. Whether you dream of witnessing the **Great Migration**, exploring the **Serengeti's vast plains**, climbing **Mount Kilimanjaro**, or simply unwinding on **Zanzibar's beaches**, Tanzania is a year-round wonderland. The best time for you depends on what you want to see, your budget, and your sense of adventure.

The Star Months: June to October & December to February

These months are the *golden windows* of Tanzanian travel—our top recommendation for an unforgettable safari.





November (Short Rains)

June to October (Dry Season)

Nature's blockbuster! Sunny skies, wildlife galore, and the world-famous **wildebeest migration with thrilling river crossings**. Parks burst with activity as animals gather at waterholes, making sightings frequent and dramatic. With pleasant temperatures, fewer mosquitoes, and excellent road conditions, this is prime safari time. Perfect also for **Kilimanjaro climbs** under clear blue skies.

December to February (Dry Season)

Tanzania transforms into lush green landscapes. It's also **calving season in the Serengeti**—adorable new-borns and intense predator action create thrilling game drives. This is a true safari jackpot for those who love both wildlife and scenery.

The Green & Quieter Seasons: March, April, May & November

If you value serenity, lush beauty, and excellent rates, the wet season has its own charm.

March (Start of Rains)

Fresh greenery, abundant birdlife, fewer tourists, and more intimate safaris—all at lower rates.

April & May (Long Rains)

The quietest time in the parks. While heavy rains make some roads tricky, the breathtaking scenery and reduced lodge rates make this perfect for photographers and peace-seekers.

Afternoon showers refresh the land, bringing flowers and greenery. Still excellent for safaris in the north, with fewer crowds.

Dry Season Highlights (Jan-Feb, Jun-Oct, Late Dec)

Pros

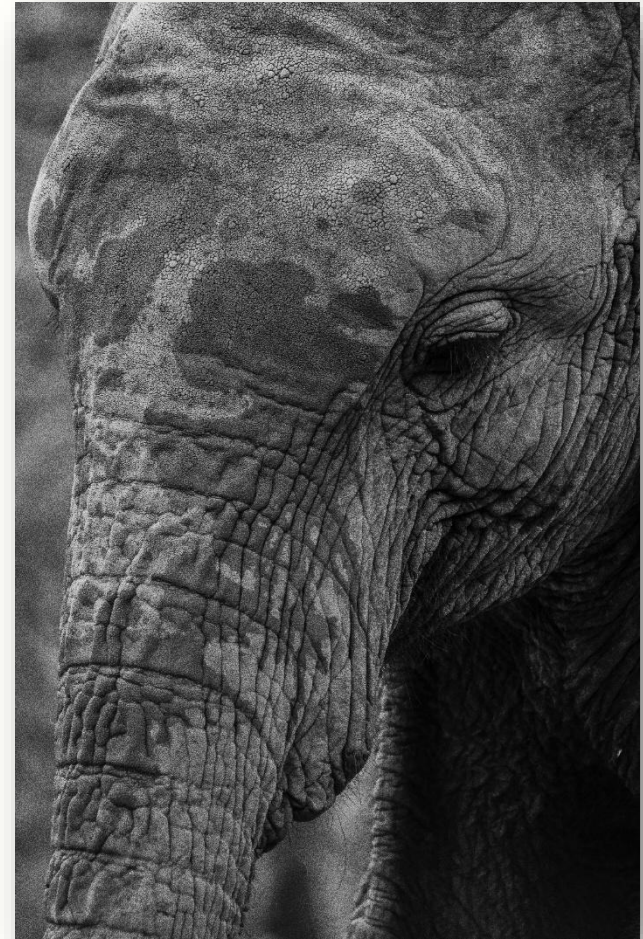
- Abundant wildlife at rivers and waterholes
- Pleasant 25–27 °C, sunny, rain-free days
- July & August: spectacular wildebeest migration river crossings
- Best climbing conditions on Kilimanjaro
- Fewer mosquitoes, better road conditions

Cons

- Higher rates for lodges and safaris
- Popular camps sell out quickly
- More visitors in key parks

Wet Season Highlights (Mar-May, Nov, Early Dec)

Pros





- Vibrant green landscapes and wildflowers
- Outstanding bird watching
- Lower safari and hotel rates
- Quieter, more personal safari experience

Cons

- Some roads difficult after heavy rains
- Afternoon showers may alter plans
- Higher mosquito presence

Tourism Seasons in Tanzania

- **High Season (Jan–Feb, Jun–Oct, Dec):**

Ideal for wildlife and the Great Migration. Most popular, but also the busiest and priciest.

- **Mid-Season (March, November–Mid Dec):**

A balanced choice—moderate prices, fewer crowds, and rewarding wildlife sightings.

- **Low Season (April–May):**

Best for budget travelers. Peaceful parks and beautiful green scenery, though some lodges close.

Experience the Great Migration Year-Round

Tanzania Weather Guide

At **Africa Travel Bureau (ATB)**, we know that understanding Tanzania's weather is key to planning the perfect journey. The good news? Tanzania is a year-round destination—there's always something magical to experience, no matter the season.

Tanzania's Climate by Region

Tanzania's weather varies across regions, shaped by altitude and proximity to the coast:

- **Coastal Areas (Dar es Salaam, Zanzibar):** Hot and humid, with daytime temperatures between 26°C and 31°C. Nights remain warm, with a distinctively tropical feel thanks to Zanzibar's equatorial location.
- **Northern Parks & Highlands (Serengeti, Ngorongoro, Arusha, Kilimanjaro):** Cooler due to higher elevation, with average daytime temperatures ranging from 22°C to 27°C. Nights can drop to between 10°C and 18°C, so pack a light sweater or jacket for evening game drives.
- **Southern & Western Tanzania (Ruaha, Nyerere, Katavi, Mahale):** Warmer and more remote, with classic African heat balanced by seasonal rains that transform the landscape.

Overall, Tanzania enjoys pleasant weather throughout the year, with temperatures generally ranging between 22°C and 31°C by day.

The Seasons of Tanzania

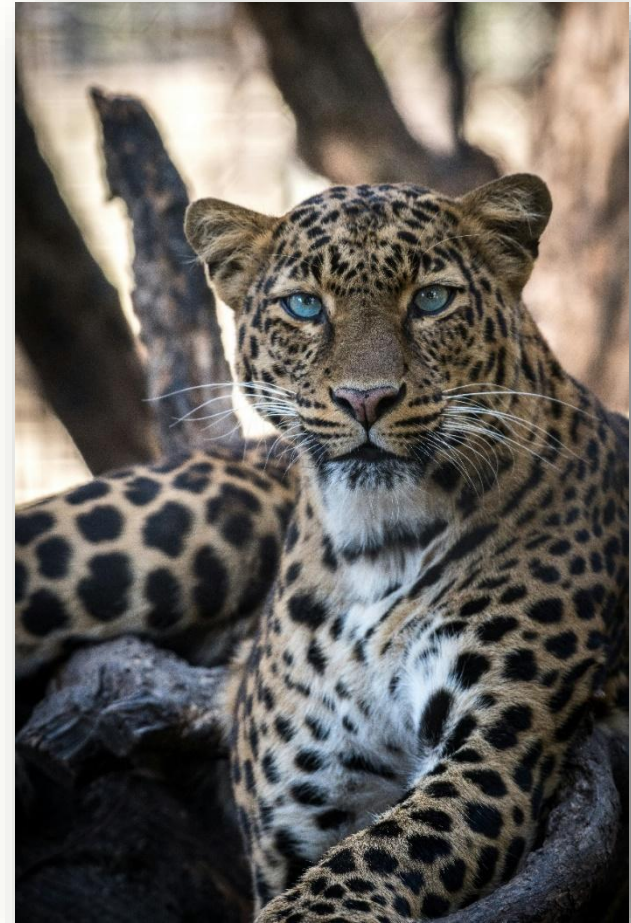
Tanzania has two distinct weather patterns:

- **Dry Season (June – October, and December – February):**

Ideal for safaris, mountain climbs, and beach escapes. Wildlife gathers around rivers and waterholes, making sightings easier. Skies are clear, mosquitoes are fewer, and travel is more comfortable.

- **Wet Season (March – May, and late October – December):**

Known as the 'long rains' (March–May) and 'short rains' (Nov–Dec). These tropical rains often fall in the late afternoon and at night, refreshing the landscapes with lush greenery, blooming flowers, and abundant birdlife. Far from being a disadvantage, the rains bring life to Tanzania's wilderness and create a more intimate safari atmosphere.



Safaris in the Rainy Season

Did you know that **National Geographic and Discovery Channel filmmakers often choose Tanzania's rainy season** to capture dramatic wildlife moments? That's because:

- Landscapes are vibrant, green, and breath-taking.
- Wildlife is abundant, active, and easy to spot thanks to plentiful food and water.
- Birdwatchers enjoy a paradise of **migratory species** arriving in large numbers.
- Fewer tourists mean a **peaceful and intimate safari experience**.
- Lodges and camps often offer **lower rates**, making it more affordable.

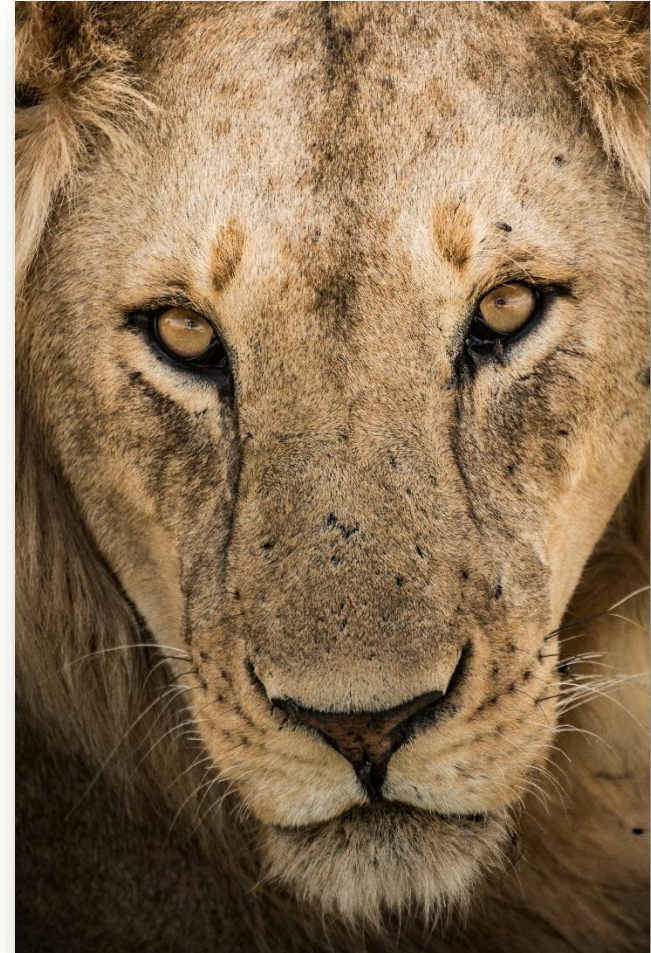
Challenges: Some roads can become muddy, and certain southern park lodges close temporarily. But northern icons like **Serengeti, Ngorongoro Crater, Tarangire, Lake Manyara, Arusha National Park, and Lake Natron** remain fully accessible and rewarding all year round.

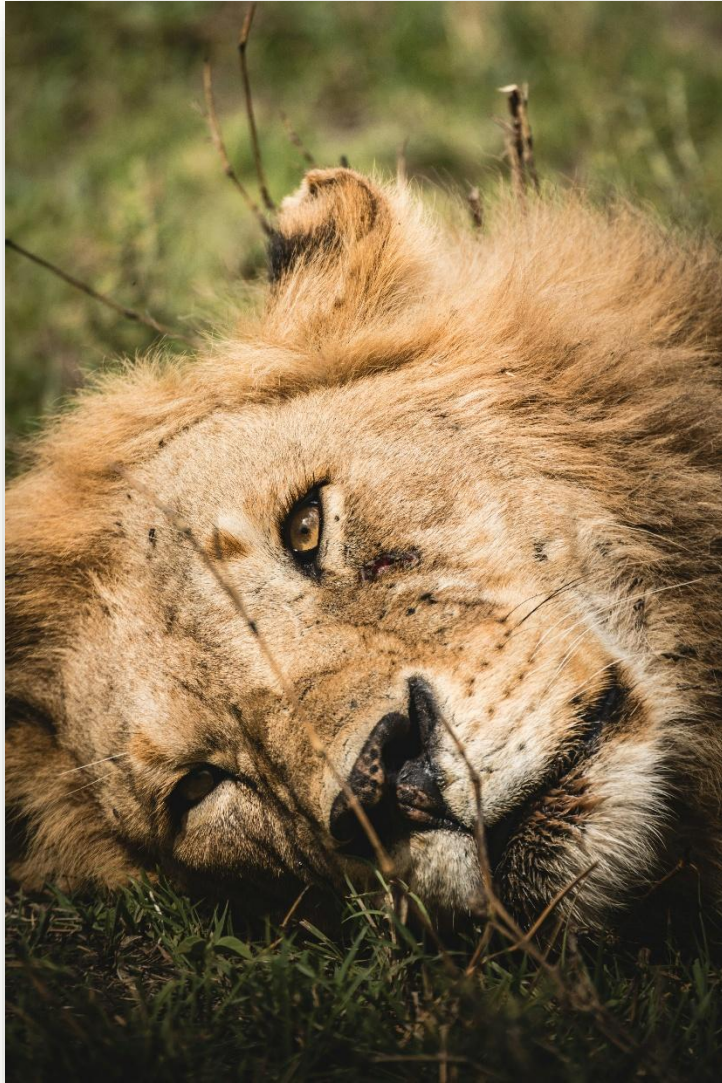
Wildlife & Weather Connection

Tanzania's weather is directly tied to its spectacular wildlife patterns:

- **Dry Season:** Animals gather around permanent water sources, making safaris action-packed and predictable. Perfect for the **Great Migration river crossings** and **Kilimanjaro climbs**.
- **Rainy Season:** Animals spread out across lush grasslands, healthier and more active. Predators thrive, prey are plentiful, and birdlife is at its best. For photographers and adventurers, this is a hidden gem season.

At **Africa Travel Bureau**, we reassure our guests that **there is no wrong season to visit Tanzania**. Each period offers its own character:





help is always within reach.

- **Dry Season:** Best for first-time safari-goers, migration chasers, and Kilimanjaro trekkers.
- **Wet Season:** Perfect for photographers, bird lovers, seasoned travelers seeking peace, and those who want the best value.

Tip from ATB Experts: If your dream includes southern parks like **Ruaha, Nyerere, or Mikumi**, we recommend traveling in the dry season. For **northern parks**, you can confidently travel year-round.

Travel Insurance for Tanzania & Zanzibar

Embarking on a safari to Tanzania is the adventure of a lifetime. But before you set off to spot lions on the Serengeti or relax on the beaches of Zanzibar, there's one essential item you should never forget: **travel insurance**.

Travel insurance is your safety net against life's unexpected twists—whether it's a sudden illness, lost luggage, or changes in your travel plans. In a country as vast and wild as Tanzania, where many safari destinations are far from urban medical facilities, having reliable coverage ensures that nothing gets in the way of your once-in-a-lifetime journey.

Why Travel Insurance Matters

A comprehensive policy protects you against:

- **Medical emergencies & evacuation**
- **Trip cancellations or interruptions**
- **Lost, delayed, or stolen baggage**
- **Accidents in remote safari areas**
- **Legal or repatriation expenses**

With travel insurance, you can focus on the thrill of the safari while knowing that

From 1st October 2024, all travelers entering Zanzibar are required to purchase the Zanzibar Mandatory Travel Insurance, regardless of any other travel insurance you may already hold.

- **Cost:** USD 44 per person (paid in advance)
- **Process:** Apply online and receive a QR code, which must be shown upon arrival.
- **Coverage Includes:**
 - Emergency medical expenses
 - Medical and body repatriation
 - Personal accidents
 - Baggage delay, theft, or loss
 - Legal expenses and personal liabilities

To apply, visit: visitzanzibar.go.tz

Tanzania Travel Advice

With nearly a 3 decade of expertise, **Africa Travel Bureau (ATB)** is proud to offer tailored travel advice that ensures your Tanzanian journey is seamless, safe, and unforgettable. Here, we answer the most common questions our travelers ask before embarking on their adventure.

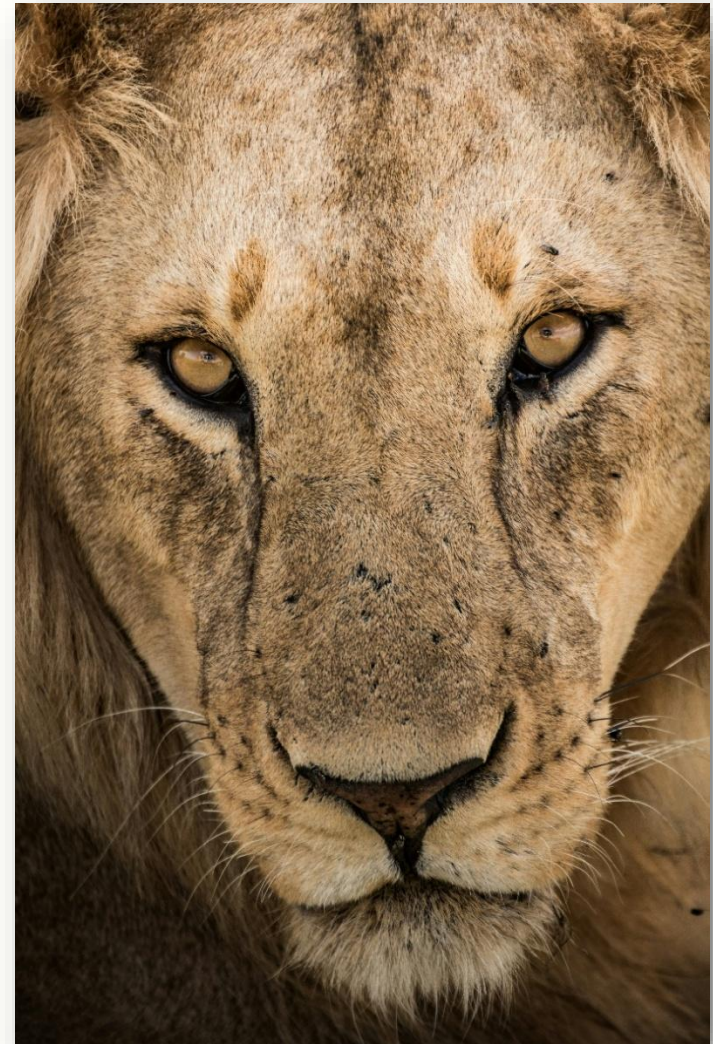
Is Tanzania Safe to Travel?

Yes! Tanzania is one of Africa's safest and most welcoming destinations, hosting over 1 million visitors each year. At ATB, your safety is our top priority. We arrange private safaris led by professional guides who not only enrich your experience but also guarantee peace of mind throughout your trip.

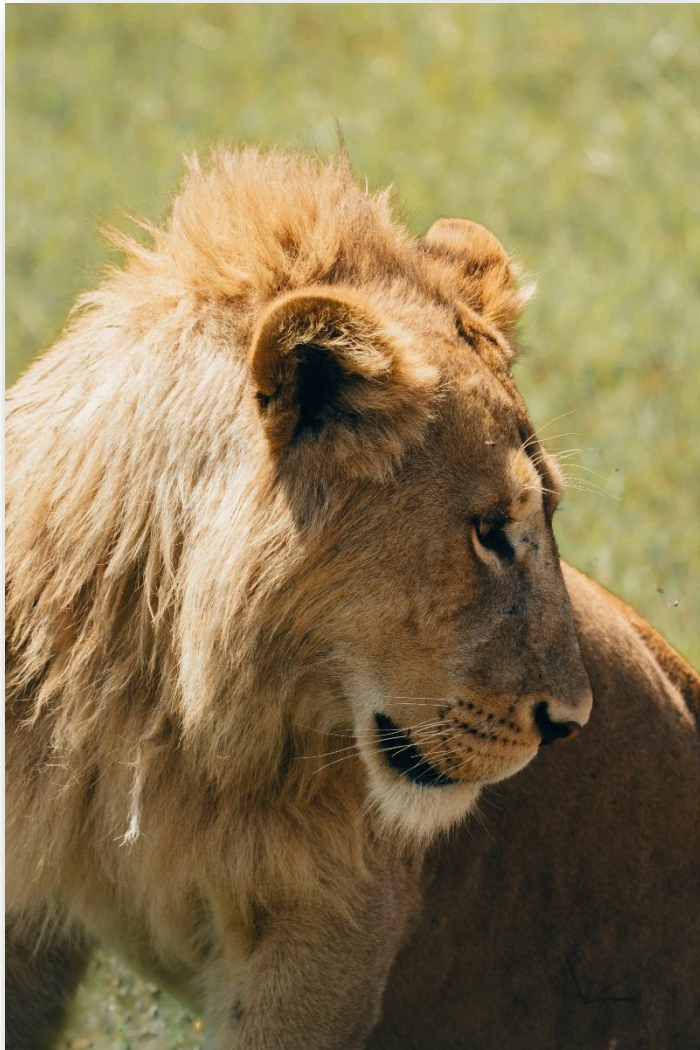
ATB Travel Tip: For added reassurance, check out our personalized **Tanzania Safety Guidelines**, crafted to help you travel confidently.

Population & Culture

Tanzania is home to nearly 60 million people and is one of Africa's most ethnically diverse nations, with over 125 ethnic groups and more than 100 languages spoken. Despite this diversity, Tanzanians are united by their warmth and hospitality.



Meeting locals adds cultural depth to your safari and is one of the best ways to experience the spirit of Tanzania.



- Los Angeles: –10 hours
- New York: –7 hours

Visa Requirements for Tanzania

Most international travellers require a visa. You can:

- Apply online via the official Tanzanian government visa portal.
- Obtain a tourist or business visa on arrival at major ports of entry.

Key Details:

- Valid for 3 months.
- Proof of return ticket may be required.
- Visa cost: **USD 50 per person** (except US citizens: **USD 100**).

Passport Requirements

Your passport must be valid for at least **6 months beyond your final day of travel**.

Vaccinations & Health

- **Yellow Fever:** Required only if traveling from or transiting through a risk country.
- **Recommended Vaccinations (CDC/WHO):** Hepatitis A & B, Typhoid, Tetanus/Diphtheria/Pertussis (TDP), MMR.
- **Optional:** Rabies & Yellow Fever (based on activities).
- **COVID-19:** As of Jan 2023, no PCR tests or vaccination certificates are required.

Always consult your physician before travel for tailored health advice.

Time Zone in Tanzania

Tanzania is **GMT +3**. Example time differences:

- London: –3 hours
- Berlin: –2 hours
- Hong Kong: +5 hours
- Tokyo: +6 hours
- Sydney: +8 hours
- Auckland: +10 hours

Currency

The local currency is the **Tanzanian shilling (TZS)**, though **US dollars and euros** are widely accepted in hotels, lodges, and for safaris.

Language

While Tanzania is home to over 100 languages, the official ones are **Swahili** and **English**. English is widely spoken in the tourism sector, but learning a few Swahili phrases can make your journey even more enriching.

ATB provides travellers with a **Swahili Essentials Guide** featuring 25 useful words and phrases.

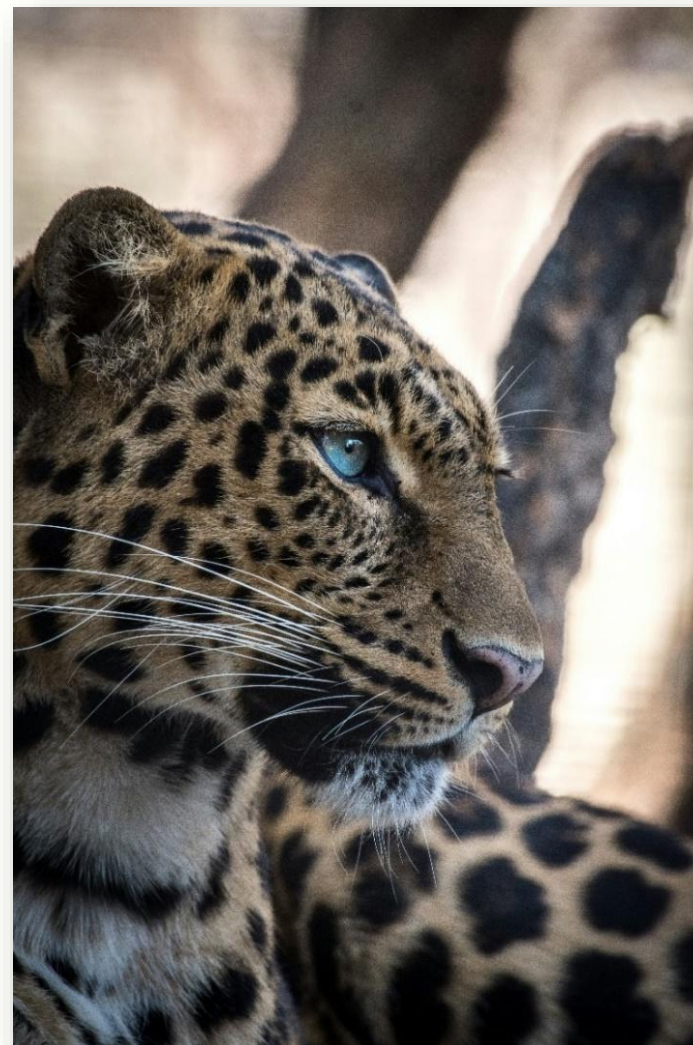
Tanzania Yellow Fever Requirements

Travel health requirements can sometimes feel confusing—but at **Africa Travel Bureau (ATB)**, we make it simple. Tanzania is officially a **yellow fever–free country**, which means it is safe to travel here without concern for this virus. Below, we answer the most common questions about yellow fever vaccination requirements for Tanzania.

Do I Need a Yellow Fever Vaccination for Tanzania?

Great news: For most travelers, the answer is **no**.

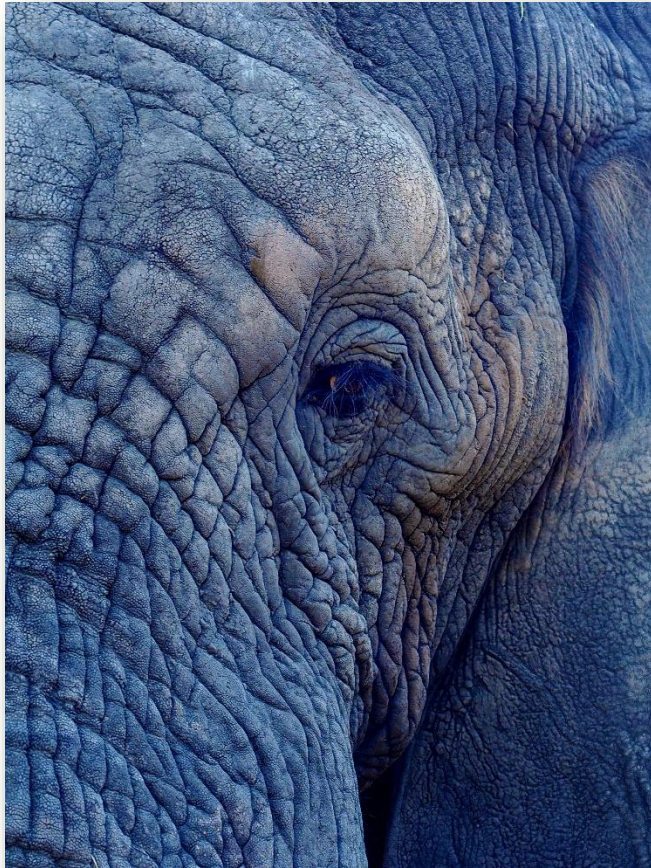
- If you are **travelling directly from Europe, the United States, or any country not considered at risk**, you do **not** need a yellow fever vaccine.
- Tanzania is classified by the **World Health Organization (WHO)** as a **low-risk country** for yellow fever.



When Is Proof of Vaccination Required?

You must present a valid yellow fever vaccination certificate if:

- You are travelling from, or have transited for **12 hours or more**, through a **yellow fever high-risk country**.
- In such cases, the vaccine is mandatory for entry into Tanzania.



Important: The current list of high-risk countries does **not** include any country in Europe or the USA.

About Yellow Fever

Yellow fever is a **viral disease spread by mosquitoes**. Symptoms may include fever, chills, headache, and muscle aches, with severe cases occurring in about 15% of patients. While Tanzania itself is yellow fever-free, vaccination rules exist to prevent cross-border transmission from other regions.

Receiving the Vaccine

- The vaccine is a **single dose**, offering **lifetime protection**.
- It should be administered at least **10 days before travelling** to or through a high-risk country.
- Always request an **International Certificate of Vaccination** from your doctor to present at immigration if required.

Medical Exemptions

If your doctor advises against vaccination due to health conditions or other risks, you may still enter Tanzania by carrying an **official medical waiver letter**. This should be shown to immigration authorities upon arrival.

ATB Travel Advice

- If travelling **directly from low-risk countries**: No vaccine required.
- If transiting through a **high-risk country for more than 12 hours**: Vaccination

required.

- If unable to vaccinate: Carry a **doctor's waiver**.

For personalized travel health guidance and the latest updates on vaccination requirements, contact **Africa Travel Bureau** before your trip.

How to Get Your Visa for Tanzania

Once you've booked your safari or Zanzibar holiday with **Africa Travel Bureau**, the next step is arranging your visa. While the process may feel overwhelming at first, rest assured—it's simple and straightforward with our guidance.

Tanzania Visa Costs

Visa fees depend on your nationality:

- **Most travelers (Europe & many other countries):** USD 50 (single-entry, valid for 3 months).
- **US citizens:** USD 100 (multi-entry visa, valid for up to 1 year).

Payment can be made online in USD, or upon arrival in **USD, EUR, or by credit card** (plus possible credit card fees).

Option 1: Apply for Your Visa Online (Recommended)

The Tanzanian government prefers online applications via its official portal:

<https://visa.immigration.go.tz/>

Advantages:

- Easy to follow (ATB provides a step-by-step PDF guide).
- Peace of mind—your visa is approved before you board your flight.
- Faster on arrival (only one queue for stamping).

Processing Time: Up to 10 days. Apply **3–4 weeks before travel** to allow for corrections if needed.

Documents Required:

- Valid passport (minimum **6 months validity after return date**)



- Digital passport photo
- Passport biodata page (max 300 kB)
- Flight ticket (PDF, max 1 MB)
- Credit card for payment
- Consent letter for children traveling with only one parent

Print or download your approval letter to show at immigration upon arrival.



Option 2: Apply for a Visa on Arrival

If you cannot apply online, you can still get your visa at the airport. The process involves **three counters**:

1. Fill in an application form (carry a pen + lodge details).
2. Pay the fee in USD/EUR cash or by credit card.
3. Get your passport stamped.

Advantages: Simple and flexible. Sometimes even faster than online queues.

Disadvantages: Requires multiple lines and a bit more patience.

Which Should You Choose?

- **Online Visa:** Best for peace of mind before traveling.
- **On Arrival Visa:** Practical if you decide last minute or face online issues.

Either way, ATB ensures you are prepared with all the correct information so that your arrival in Tanzania is smooth and stress-free.

Important Notes

- **Referral Visa:** Nationals of certain countries must apply in advance (not eligible for on-arrival visas). Check the official guidelines before you travel.
- **Future Regulations:** Tanzania may phase out on-arrival visas in the future—always confirm before departure.
- **Children Traveling with One Parent:** Must present written consent from the other parent in English.

ATB Travel Tip

No matter how you choose to apply, remember:

- Carry your visa approval (print or digital copy).
- Have cash (USD/EUR) available, even if paying by card.
- Keep a pen handy for airport forms.
- Double-check your passport validity.

Flying Doctors Services in East Africa

When planning a safari, it's natural to wonder what happens if you face a medical emergency in the wilderness. That's where **AMREF Flying Doctors** step in—a trusted air ambulance service operating across East Africa since 1957. With doctors and pilots on standby **24/7**, they provide emergency evacuations from even the most remote locations.

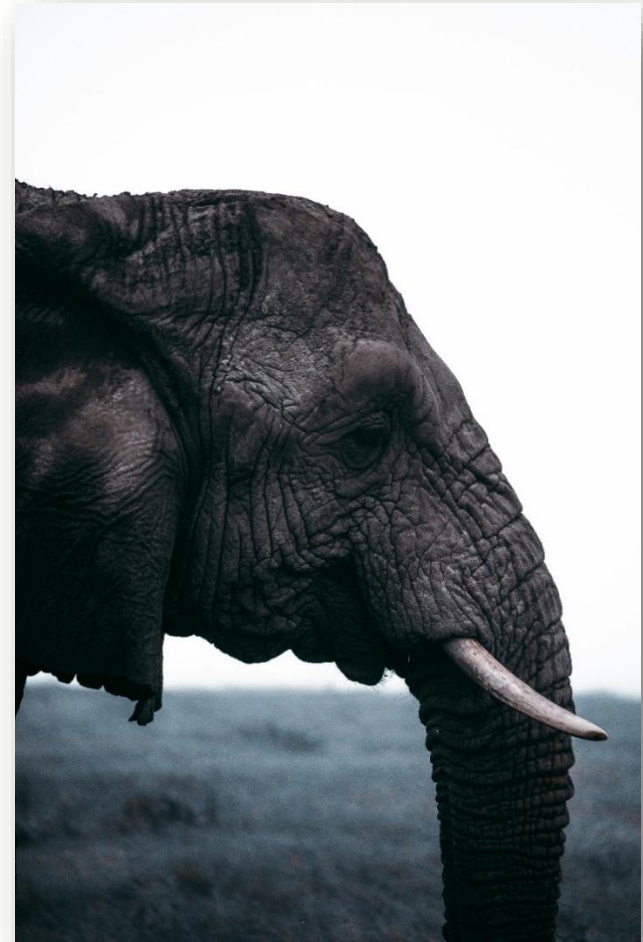
For just **USD 40 per person for 30 days**, you can enjoy your safari worry-free across **Tanzania, Kenya, Uganda, Rwanda, and Burundi**.

How Flying Doctors Work

- **Emergency Assistance:** Immediate medical advice is just a phone call away.
- **Air Evacuation:** In case of serious injury or illness, you'll be flown to a fully equipped hospital in **Nairobi, Kenya**, or **Moshi, Tanzania** (for Kilimanjaro evacuations).
- **Quick Response:** Teams are trained to reach the nearest airstrip fast, ensuring critical care when every minute counts.

Real-Life Scenarios

- **Snake Bite in Masai Mara:** Professional advice may help you continue your journey safely—or you'll be evacuated if needed.
- **Accident in Serengeti or Uganda:** Whether it's a broken leg or a sudden medical complication, Flying Doctors can have a fully equipped aircraft and medical team waiting at the closest airstrip.
- **On Kilimanjaro:** Helicopter evacuations are available (weather and altitude permitting) to nearby hospitals in Moshi.
- **On Mount Meru:** *Not covered by Flying Doctors Insurance.* Ensure your personal travel insurance covers this.



Important Limitations

- **Covered:** Emergency evacuation and air transport.
- **Not Covered:** Hospital treatment, visa costs (if flown to Kenya), or medical bills after evacuation.
- **Recommendation:** Always combine Flying Doctors cover with **comprehensive travel insurance** for full protection.

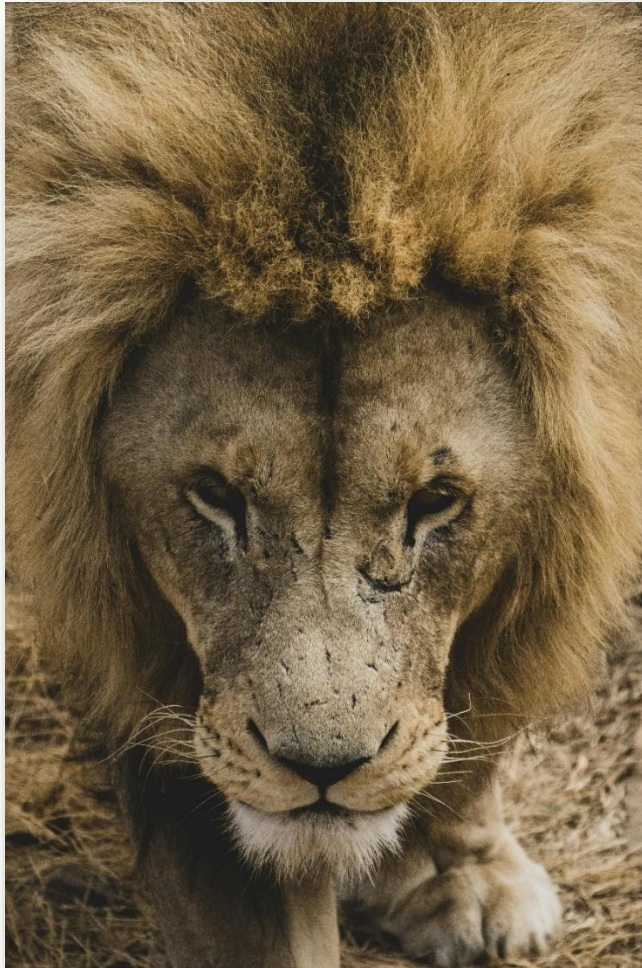
Why It Matters

Traveling to Tanzania means immersing yourself in **untamed nature**, where surprises are part of the adventure. While 99% of our clients return home with only wonderful memories, having Flying Doctors coverage ensures that if the unexpected happens, you'll be in safe hands.

With ATB and Flying Doctors by your side, you can embrace adventure with confidence—knowing that help is always within reach.

*Our Ready-Made Products:
Scheduled Group Tours*





Tanzania Northern Highlights (TNH)

7-days small group tour – lodge safari from/to Arusha

- **Guaranteed departure from 1 person only**
- **Small group – max 6 persons per vehicle**
- **4x4 Safari vehicle (Land Cruiser) with English-speaking driver-guide with moderately good German knowledge**
- **Window seat guarantee**
- **Follow the Migration** – depending on the time of the year and the rains it will determine where you will spend the most time in the Serengeti NP. **End of September – early November** the migration enters the Serengeti at the north. **Early November – mid-December** and again **end of May – June** the herds are around the Seronera Area of Central Serengeti. **Mid-December to May** the herds, are in the south around Lake Ndutu and **late May – early July** they are on their way north through the western corridor.
- **6 nights in middle class lodges / tented camps**
- **Cultural & Nature Activities** (all activities are weather dependent)
 - o Coffee Tour in Karatu
 - o Nature Walk in Tarangire
- Solo Travellers / room-mate matching – save single room supplement: designed to cut cost of hotel accommodation for single person travelling alone. ATB will match you with another person of the same gender, so that you don't have to pay the single room supplement. If however, a guest requests a single room or tent, these are available, with the single room supplement indicated applying.

Day 1 – Saturday – Arusha

Arrive at Kilimanjaro International Airport. Transfer to *African View Lodge* or *Dik Hotel* (1 hour drive) for dinner and overnight

Day 2 – Sunday – Lake Manyara NP

Breakfast at the lodge. 08.30h Drive to Lake Manyara NP (2.5 hour's drive). Morning and afternoon unlimited game viewing. Picnic lunch. Dinner and overnight at *Country Lodge*.

Day 3 – Monday – Ngorongoro Crater

Breakfast at the lodge. 08.00h Drive to Ngorongoro Crater (20 minutes' drive) for half day (5 hours) crater tour. Continue to Serengeti NP (3 hour's drive). Picnic lunch en route. Dinner and overnight at *Hippo Trails Camp*.

Depending on the time of the year and the rains it will determine where you will travel to for full day game viewing drive, to follow the Wildebeests and Zebras on their migration route.

1. Dec to Mar, game drive in **Southern** Serengeti NP en route for overnight in Central Serengeti NP
2. Apr to May, full day game drive in **Central** Serengeti NP
3. Jun, full day game drive to **Western** Serengeti NP
4. Jul to Oct, full day game drive to **Northern** Serengeti NP
5. Nov, full day game drive in **Central** Serengeti NP

Day 4 – Tuesday – Serengeti NP

Full day unlimited game viewing in the park. All meals and overnight at *Hippo Trails Camp*.

Day 5 – Wednesday – Karatu

06.30h Early morning game viewing. Breakfast at the camp. 10.00h Drive to Karatu (3.5 hour's drive) with game viewing and picnic en route (2 hours). Evening guided Coffee Tour (1.5 hours). Dinner and overnight at *Marera Safari Lodge*.

Day 6 – Thursday – Tarangire NP

Breakfast at the lodge. 08.00h Drive to Tarangire NP (2 hours). Morning and afternoon unlimited game viewing. Picnic lunch. Dinner and overnight at *Sangaiwe Tented Lodge*.

Day 7 – Friday

06.30h Morning guided nature walk to Sangaiwe Hill (1.5 hours). Breakfast at the camp. 09.00h Drive back to Arusha (2 hours). Picnic lunch. Transfer back to Kilimanjaro International Airport.

Note: Your safari ends there, but an add-on program could begin at this point...

Note: Age policy – children 12 – 15 years old accepted with accompanying adult. No upper limit. Guests older than 65 years of age at time of travel require a medical certificate stating guest is fit and healthy to join a group tour.

Price inclusions. airport transfer from Kilimanjaro International Airport to African View Lodge in non-private (shared) vehicle; transportation while on safari in non-private (shared) safari-equipped 4-wheel-drive Toyota Land Cruiser driven by English-speaking driver/guide with moderately good German knowledge (a window seat is guaranteed to each passenger); meals and accommodations as described in the itinerary; all entrance fees; bottled water/tea/coffee in the vehicle while on safari (*ATBGreenSafari*).

ATB GreenSafari ReduceReuseRecycle Package:

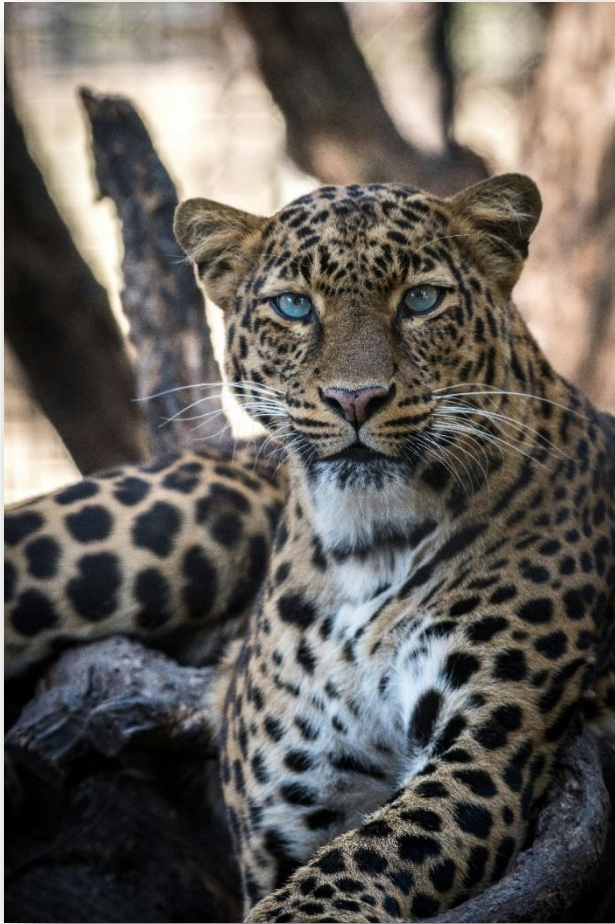


- Complimentary take-home reusable water bottle.
- Refillable in-car drinking water.
- Self-pack waste-reducing picnic lunches in reusable stainless steel Tiffin food containers.

Sustainable tea/coffee in-car-on-safari service – hot water stainless steel thermos, stainless steel tea/coffee mugs, stainless steel tea spoons, mason jar-packed tea/sugar bags, Coffee Press-prepared ground Tanzania coffee.

<u>EX-ZANZIBAR</u>	<u>EX-DAR ES SALAAM</u>	<u>EX-NAIROBI</u>
Day 1, Sat, Stone Town, Tembo House Hotel, BB, transfers	Day 1, Sat, Dar es Salaam, Hotel Slipway (standard room), BB, transfers	Day 1, Sat, Arusha, African View Lodge, BB, Shuttle Bus Nairobi – Arusha 08.00h – 14.00h or 14.00h – 19.00h, transfer in Arusha
Day 2, Sun, Lake Manyara NP, Country Lodge, FB, transfers, Flightlink ZNZ-MANYARA 08.00h – 10.05, Treetop Walkway Tour, full day game Drive	Day 2, Sun, Lake Manyara NP, Country Lodge, FB, transfers, Flightlink DAR-MANYARA via ZNZ 07.00h – 10.05h, Treetop Walkway Tour, full day game drive	Day 2, Sun, Lake Manyara NP, Country Lodge, FB, full day game drive
Day 3, Mon, Ngorongoro Crater, Hippo Trails Camp, FB, half day crater tour	Day 3, Mon, Ngorongoro Crater, Hippo Trails Camp, FB, half day crater tour	Day 3, Mon, Ngorongoro Crater, Hippo Trails Camp, FB, half day crater tour
Day 4, Tue, Serengeti NP, Hippo Trails Camp, FB, full day game drive	Day 4, Tue, Serengeti NP, Hippo Trails Camp, FB, full day game drive	Day 4, Tue, Serengeti NP, Hippo Trails Camp, FB, full day game drive
Day 5, Wed, Karatu, Marera Valley Lodge, FB, game drive en route in Serengeti NP	Day 5, Wed, Karatu, Marera Valley Lodge, FB, game drive en route in Serengeti NP	Day 5, Wed, Karatu, Marera Valley Lodge, FB, game drive en route in Serengeti NP
Day 6, Thu, Tarangire NP, Sangaiwe Tented Lodge, FB, full day game drive	Day 6, Thu, Tarangire NP, Sangaiwe Tented Lodge, FB, full day game drive	Day 6, Thu, Tarangire NP, Sangaiwe Tented Lodge, FB, full day game drive
Day 7, Drive back to Arusha	Day 7, Drive back to Arusha	Day 7, Drive back to Arusha

Number of participants: min. 1 – max. 6 Persons



Kenya Tanzania Highlights (KTH)

13-days small group tour – lodge safari from Nairobi/to Arusha

- **Guaranteed departure from 1 person only**
- **Small group – max 6 persons per vehicle**
- **4x4 Safari vehicle (Land Cruiser) with English-speaking driver-guide with moderately good German knowledge**
- **Window seat guarantee**
- **Highlights of Kenya** – Masai Mara, Lake Nakuru and Amboseli
- **Follow the Migration in Tanzania** – depending on the time of the year and the rains it will determine where you will spend the most time in the Serengeti NP. **End of September – early November** the migration enters the Serengeti at the north. **Early November – mid-December** and again **end of May – June** the herds are around the Seronera Area of Central Serengeti. **Mid-December to May** the herds, are in the south around Lake Ndutu, and **late May – early July** they are on their way north through the western corridor.
- **12 nights in middle class lodges / tented camps**
- **Solo Travellers / room-mate matching** – save single room supplement: designed to cut cost of hotel accommodation for single person travelling alone. ATB will match you with another person of the same gender, so that you don't have to pay the single room supplement. If however a guest requests a single room or tent, these are available, with the single room supplement indicated applying.

Day 1 – Sunday – Nairobi

Arrive Jomo Kenyatta International Airport. Meet and transfer to Wildebeest Eco Camp – *deluxe safari tent* (45 minutes' drive), located in Nairobi's tranquil suburb of Karen District, for dinner and overnight.

Day 2 – Monday – Masai Mara NR

Breakfast at the hotel. 08.00h Drive to Masai Mara National Reserve (5 hour's drive). Lunch at Ilkeliani Camp. Afternoon game viewing. Dinner and overnight at *Ilkeliani Camp*.

Day 3 – Tuesday – Masai Mara NR

Full day unlimited game viewing in the reserve. All meals and overnight at *Ilkeliani Camp*.

Day 4 – Wednesday – Lake Nakuru NP

Breakfast at the camp. 08.00h Drive to Lake Nakuru NP (4 hour's drive). Lunch at Flamingo Hill Camp. Afternoon game viewing. Dinner and overnight at *Flamingo Hill Camp*.

Day 5 – Thursday – Amboseli NP

Breakfast at the camp. 08.00h Drive to Nairobi (3 hour's drive). Continue to Amboseli NP (4 hour's drive). Local lunch en route at a restaurant in Emali village. Evening guided Nature Walk. Dinner and overnight at *Kibo Safari Camp*.

Day 6 – Friday – Amboseli NP

Full day unlimited game viewing. All meals and overnight at *Kibo Safari Camp*. **Day 7 – Saturday – Arusha**

Breakfast at the camp. 08.00h Transfer to Tarakea Border Post of Kenya and Tanzania (2 hour's drive). Immigration/customs formalities (0.5 hour). Transfer to Tanzania vehicle and guide for onward journey to Arusha (5 hours drive). Visit Kinukamori Waterfalls – one of the three main waterfalls in Marangu area, accompanied by local guide. Picnic lunch. Dinner and overnight at *African View Lodge* or *Dik Dik Hotel*.

Day 8 – Sunday – Lake Manyara NP

Breakfast at the lodge. 08.30h Drive to Lake Manyara NP (2.5 hour's drive). Morning and afternoon unlimited game viewing. Picnic lunch. Dinner and overnight at *Country Lodge*.

Day 9 – Monday – Ngorongoro Crater

Breakfast at the lodge. 08.00h Drive to Ngorongoro Crater (20 minutes' drive) for half day (5 hours) crater tour. Continue to Serengeti NP (3 hour's drive). Picnic lunch en route. Dinner and overnight at *Hippo Trails Camp*.

Depending on the time of the year and the rains it will determine where you will travel to for full day game viewing drive, to follow the Wildebeests and Zebras on their migration route.

1. *Dec to Mar, game drive in **Southern** Serengeti NP en route for overnight in Central Serengeti NP*
2. *Apr to May, full day game drive in **Central** Serengeti NP*
3. *Jun, full day game drive to **Western** Serengeti NP*
4. *Jul to Oct, full day game drive to **Northern** Serengeti NP*
5. *Nov, full day game drive in **Central** Serengeti NP*

Day 10 – Tuesday – Serengeti NP

Full day unlimited game viewing in the park. All meals and overnight at *Hippo Trails Camp*.

Day 11 – Wednesday – Karatu

06.30h Early morning game viewing. Breakfast at the camp. 10.00h Drive to Karatu (3.5 hour's drive) with game viewing (2 hours) and picnic en route. Evening guided Coffee Tour (1.5 hours). Dinner and overnight at *Marera Valley Lodge*.

Day 12 – Thursday – Tarangire NP

Breakfast at the lodge. 08.00h Drive to Tarangire NP (2 hour's drive). Morning and afternoon unlimited game viewing. Picnic lunch. Dinner and overnight at *Sangaiwe Tented Lodge*.

Day 13 – Friday

06.30h Morning guided nature walk to the shores of Lake Burunge (1.5 hours). Breakfast at the camp. 09.00h Drive back to Arusha (2 hours). Picnic lunch.



Note: Your safari ends there, but an add-on program could begin at this point...

Note: Age policy – children 12 – 15 years old accepted with accompanying adult. No upper limit. Guests older than 65 years of age at time of travel require a medical certificate stating guest is fit and healthy to join a group tour.

Price inclusions. **Kenya:** transportation while on safari in non-private (shared) safari-equipped 4-wheel-drive Toyota Land Cruiser driven by English-speaking driver/guide (a window seat is guaranteed to each passenger); meals and accommodations as described in the itinerary; all entrance fees; bottled water in the vehicle while on safari (*ATBGreenSafari*). **Tanzania:** all transfers in Arusha in non-private (shared) vehicle; transportation while on safari in non-private (shared) safari-equipped 4-wheel-drive Toyota Land Cruiser driven by English-speaking driver/guide (a window seat is guaranteed to each passenger); meals and accommodations as described in the itinerary; all entrance fees; bottled water/tea/coffee in the vehicle while on safari (*ATBGreenSafari*).

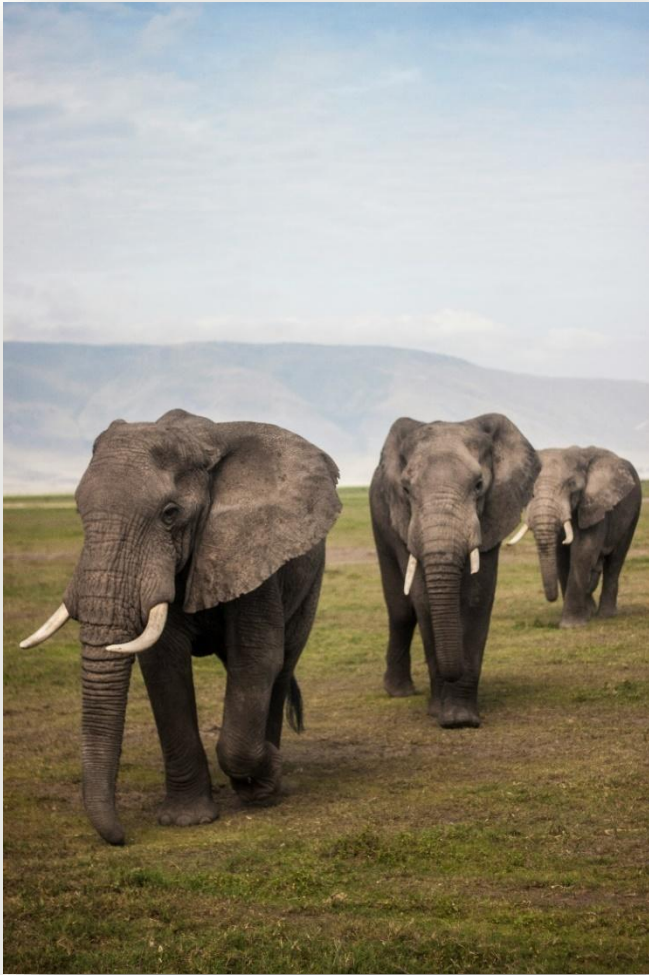
ATB GreenSafari ReduceReuseRecycle Package:

- Complimentary take-home reusable water bottle.
- Refillable in-car drinking water.
- Self-pack waste-reducing picnic lunches in reusable stainless steel Tiffin food containers.

Sustainable tea/coffee in-car-on-safari service – hot water stainless steel thermos, stainless steel tea/coffee mugs, stainless steel tea spoons, mason jar-packed tea/sugar bags, Coffee Press-prepared ground Tanzania coffee.

Number of participants: min. 1 – max. 6 Persons per vehicle





Kenya Highlights (KH)

7-days small group tour – lodge safari from/to Nairobi

- **Guaranteed departure from 1 person only**
- **Small group – max 6 persons per vehicle**
- **4x4 Safari vehicle (Land Cruiser) with English-speaking driver-guide with moderately good German knowledge**
- **Window seat guarantee**
- **Highlights of Kenya – Masai Mara, Lake Nakuru and Amboseli**
- **6 nights in middle class lodges / tented camps**
- Solo Travellers / room-mate matching – save single room supplement: designed to cut cost of hotel accommodation for single person travelling alone. ATB will match you with another person of the same gender, so that you don't have to pay the single room supplement. If however a guest requests a single room or tent, these are available, with the single room supplement indicated applying.

Day 1 – Sunday – Nairobi

Arrive Jomo Kenyatta International Airport. Meet and transfer to Wildebeest Eco Camp – *deluxe safari tent* (45 minutes drive), located in Nairobi's tranquil suburb of Karen District, for dinner and overnight.

Day 2 – Monday – Masai Mara NR

Breakfast at the hotel. 08.00h Drive to Masai Mara National Reserve (5 hours' drive). Lunch at Ilkeliani Camp. Afternoon game viewing. Dinner and overnight at *Ilkeliani Camp*.

Day 3 – Tuesday – Masai Mara NR

Full day unlimited game viewing in the reserve. All meals and overnight at *Ilkeliani Camp*.

Day 4 – Wednesday – Lake Nakuru NP

Breakfast at the camp. 08.00h Drive to Lake Nakuru NP (4 hours' drive). Lunch at Flamingo Hill Camp. Afternoon game viewing. Dinner and overnight at *Flamingo Hill Camp*.

Day 5 – Thursday – Amboseli NP

Breakfast at the camp. 08.00h Drive to Nairobi (3 hours' drive). Continue to Amboseli NP (4 hours' drive). Local lunch en route at a restaurant in Emali village. Evening guided Nature Walk. Dinner and overnight at *Kibo Safari Camp*.

Day 6 – Friday – Amboseli NP

Full day unlimited game viewing. All meals and overnight at *Kibo Safari Camp*.

Day 7 – Saturday – Arusha

Breakfast at the camp. Drive back to Nairobi. Picnic lunch en route at Malili village. Transfer to Jomo Kenyatta International Airport.

Note: Your safari ends there, but an add-on program could begin at this point...tour participants continuing to Tanzania to join the *Tanzania Northern Highlights* group tour will be dropped off at the Tarakea Border Post for onward transfer to Arusha....tour participants continuing to join *Beach add-on Mombasa* will be transferred in Kibo Safari Camp vehicle to Madaraka Express Train Station at Emali (3 hours' drive).

Note: Age policy – children 12 – 15 years old accepted with accompanying adult. No upper limit. Guests older than 65 years of age at time of travel require a medical certificate stating guest is fit and healthy to join a group tour.

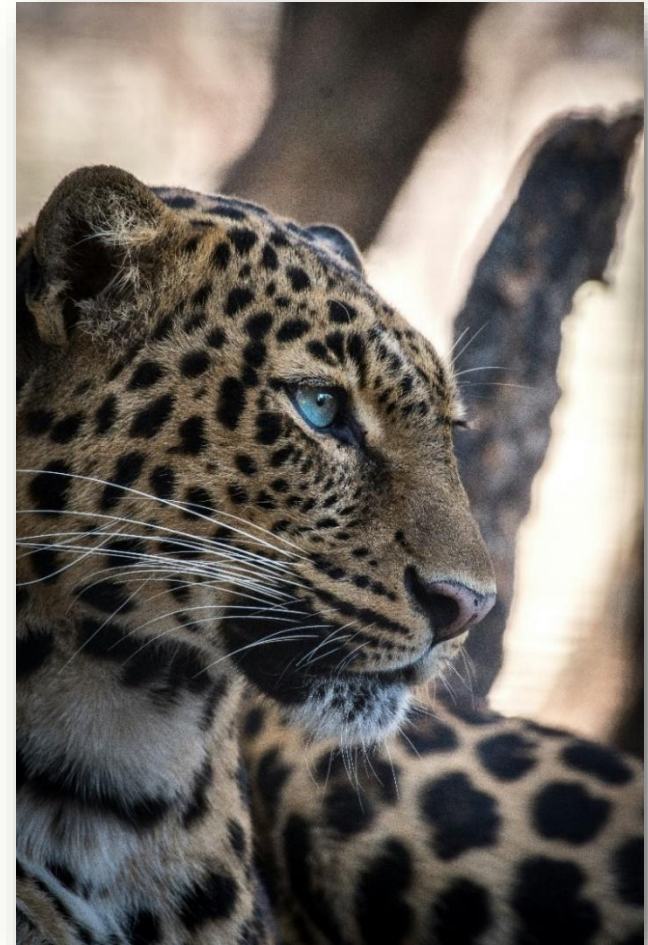
Price inclusions. transportation while on safari in non-private (shared) safari-equipped 4-wheel-drive Toyota Land Cruiser driven by English-speaking driver/guide (a window seat is guaranteed to each passenger); meals and accommodations as described in the itinerary; all entrance fees; bottled water in the vehicle while on safari (*ATBGreenSafari*).

ATB GreenSafari ReduceReuseRecycle Package:

- Complimentary take-home reusable water bottle.
- Refillable in-car drinking water.
- Self-pack waste-reducing picnic lunches in reusable stainless steel Tiffin food containers.

Sustainable tea/coffee in-car-on-safari service – hot water stainless steel thermos, stainless steel tea/coffee mugs, stainless steel tea spoons, mason jar-packed tea/sugar bags, Coffee Press-prepared ground Tanzania coffee.

Number of participants: min. 1 – max. 6 Persons per vehicle





Southern Wilderness Classic (SWC)

13-days **small group tour – lodge safari** from/to Dar es Salaam.

- **Guaranteed departure from 4 person**
- **Small group – max 6 persons per vehicle**
- **4x4 Safari vehicle (Land Cruiser) with English-speaking driver-guide.**
- **Window seat guarantee**
- **Highlights of Southern Tanzania** – Mikumi, Ruaha, Udzungwa Mountains and Northern and Eastern Selous.
- **Game drives in Ruaha and Selous in ATB vehicles driven by camp driver/guides.**
- **12 nights in middle class lodges / tented camps**
- Solo Travellers / room-mate matching – save single room supplement: designed to cut cost of hotel accommodation for single person travelling alone. ATB will match you with another person of the same gender, so that you don't have to pay the single room supplement. If however a guest requests a single room or tent, these are available, with the single room supplement indicated applying.

Day 1 – Dar es Salaam

Arrive Julius Nyerere International Airport. Meet and transfer to *Mediterraneo Boutique Hotel* (45 minutes' drive) for dinner and overnight.

Day 2 – Mikumi NP

Breakfast at the hotel. 07.00h Drive to Mikumi NP (6 hours' drive), arriving for lunch at Camp Bastian. Afternoon guided village tour. Dinner and overnight at *Camp Bastian*

Day 3 – Mikumi NP

Full day unlimited game viewing in the reserve. All meals and overnight at *Camp Bastian*

Day 4 – Ruaha NP

Breakfast at the lodge. 08.00h Drive to Ruaha NP (6 hours' drive). Picnic lunch. Afternoon at leisure to relax at the camp. Dinner and overnight at *Tandala Tented Camp*.

Day 5 – Ruaha NP

Breakfast at the camp. Full day game viewing in the park in camp vehicle/guide. Picnic lunch. Dinner and overnight at *Tandala Tented Camp*.

Day 6 – Ruaha NP

Breakfast at the camp. Morning cultural tour – Maasai Boma, the local village, primary school and dispensary. Lunch at the camp. Afternoon game viewing in the park in camp vehicle/guide. Dinner and overnight at *Tandala Tented Camp*.

Day 7 – Udzungwa Mountains NP

Breakfast at the camp. 08.00h Drive to Udzungwa Mountains NP (7 hours' drive). Lunch at Crocodile Camp. Afternoon guided nature walk around the camp. Dinner and overnight at *Udzungwa Forest Camp*.

Day 8 – Udzungwa Mountains NP

Breakfast at the camp. Morning half day Sanje Waterfalls Hike and (*Optional afternoon Mang'ula Village Tour*). All meals and overnight at *Udzungwa Forest Camp*.

Day 9 – North Selous Game Reserve

Breakfast at the camp. 08.00h Drive to North Selous Game Reserve (8 hours' drive). Picnic lunch. Evening at leisure to relax. Dinner and overnight at *Sable Mountain Lodge*.

Day 10 – North Selous Game Reserve

Early morning guided bush walk with ranger from the camp. Return to the camp for breakfast. Morning/midday game drive in Northern Selous Game Reserve. Lunch at the camp. Evening guided Village Tour. Dinner and overnight at *Sable Mountain Lodge*.

Day 11 – East Selous Game Reserve

Breakfast at the lodge. Drive across the game reserve from north to east (2.5 hours' drive) with game viewing. Picnic lunch. Afternoon boat safari. Dinner and overnight at *Selous Wilderness Camp*.

Day 12 – East Selous Game Reserve

Pre-dawn guided walking safari from the camp. Morning/midday game viewing in the park. Lunch at the camp. Afternoon game viewing drive in the park. All meals and overnight at *Selous Wilderness Camp*.

Day 13 – Depart

Breakfast at the camp. Drive to Dar es Salaam. Picnic lunch en route. On arrival transfer to Hotel Blue Sapphire for day room. Later transfer back to the airport for outbound flight.

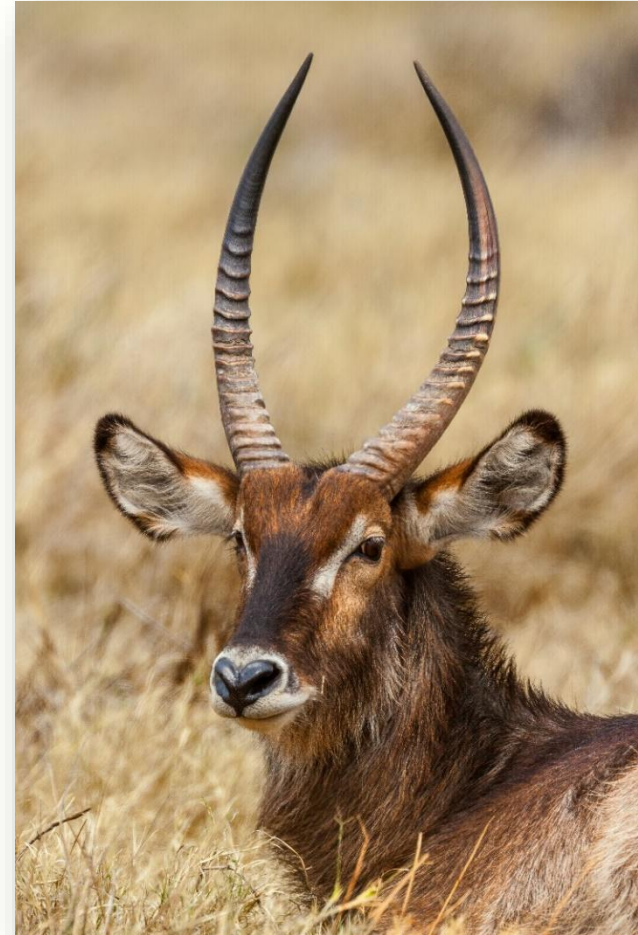
Note: Your safari ends there, but an add-on program could begin at this point...

Note: Age policy – children 12 – 15 years old accepted with accompanying adult. No upper limit. Guests older than 65 years of age at time of travel require a medical certificate stating guest is fit and healthy to join a group tour.

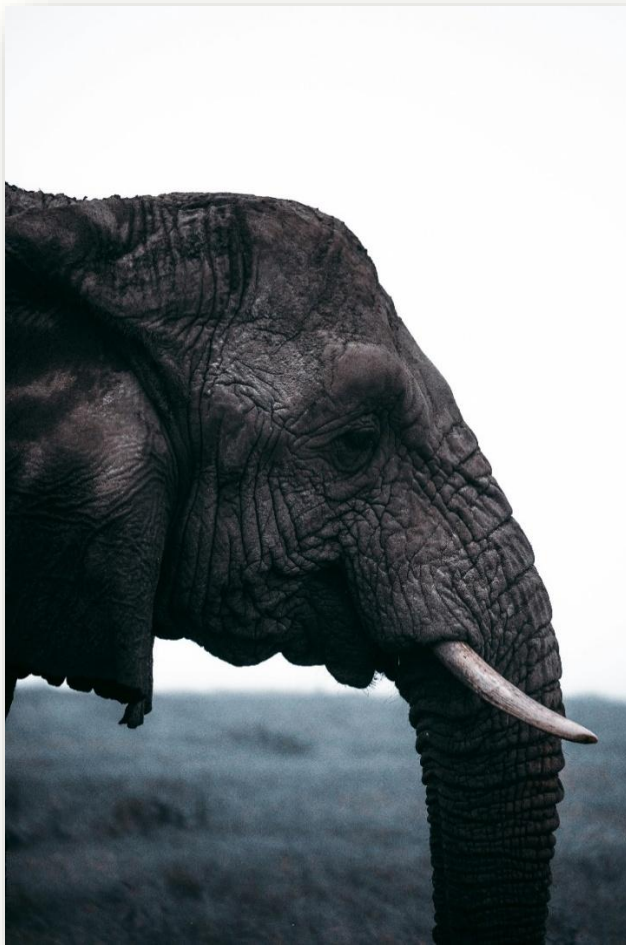
Price inclusions. all transfers in Dar es Salaam in non-private (shared) vehicle; transportation while on safari in non-private (shared) safari-equipped 4-wheel-drive Toyota Land Cruiser driven by English-speaking driver/guide (a window seat is guaranteed to each passenger); meals and accommodations as described in the itinerary; all entrance fees; bottled water/tea/coffee in the vehicle while on safari (*ATBGreenSafari*).

ATB GreenSafari ReduceReuseRecycle Package:

- Complimentary take-home reusable water bottle.
- Refillable in-car drinking water.



- Self-pack waste-reducing picnic lunches in reusable stainless steel Tiffin food containers.
- Sustainable tea/coffee in-car-on-safari service – hot water stainless steel thermos, stainless steel tea/coffee mugs, stainless steel tea spoons, mason jar-packed tea/sugar bags, Coffee Press-prepared ground Tanzania coffee.



Tanzania Grand Classic (TGC):

19-days **small group tour – lodge safari** from Arusha/to Dar es Salaam

- This tour is a combo of the TNH and SWC small group tours
- Transfer from Arusha to Mikumi NP via Korogwe village in luxury minibus with air-conditioning (along an all-tarmac road)
- Guaranteed departure from 4 persons
- **Small group – max 6 persons per vehicle**
- **4x4 Safari vehicle (Land Cruiser) with English-speaking driver-guide .**
- **Window seat guarantee**
- 18 nights in middle class lodges / tented camps
- Solo Travelers / room-mate matching – save single room supplement: designed to cut cost of hotel accommodation for single person travelling alone. ATB will match you with another person of the same gender, so that you don't have to pay the single room supplement. If however a guest requests a single room or tent, these are available, with the single room supplement indicated applying.

Day 1 – Saturday – Arusha

Arrive at Kilimanjaro International Airport. Transfer to *African View Lodge* or *Dik Dik Hotel* (1 hour drive) for dinner and overnight.

Day 2 – Sunday – Lake Manyara NP

Breakfast at the lodge. 08.30h Drive to Lake Manyara NP (2.5 hours' drive). Morning and afternoon unlimited game viewing. Picnic lunch. Dinner and overnight at *Country Lodge*.

Day 3 – Monday – Ngorongoro Crater

Breakfast at the lodge. 08.00h Drive to Ngorongoro Crater (20 minutes' drive) for half day (5 hours) crater tour. Continue to Serengeti NP (3 hours' drive). Picnic lunch en route. Dinner and overnight at *Hippo Trails Camp*.

Depending on the time of the year and the rains it will determine where you will travel to for full day game viewing drive, to follow the Wildebeests and Zebras on their migration route.

1. *Dec to Mar, game drive in **Southern** Serengeti NP en route for overnight in Central Serengeti NP Apr to May, full day game drive in **Central** Serengeti NP*
2. *Jun, full day game drive to **Western** Serengeti NP*
3. *Jul to Oct, full day game drive to **Northern** Serengeti NP Nov, full day game drive in **Central** Serengeti NP*

Day 4 – Tuesday – Serengeti NP

Full day unlimited game viewing in the park. All meals and overnight at *Hippo Trails Camp*.

Day 5 – Wednesday – Karatu

06.30h Early morning game viewing. Breakfast at the camp. 10.00h Drive to Karatu (3.5 hours' drive) with game viewing and picnic en route (2 hours). Evening guided Coffee Tour (1.5 hours). Dinner and overnight at *Marera Safari Lodge*.

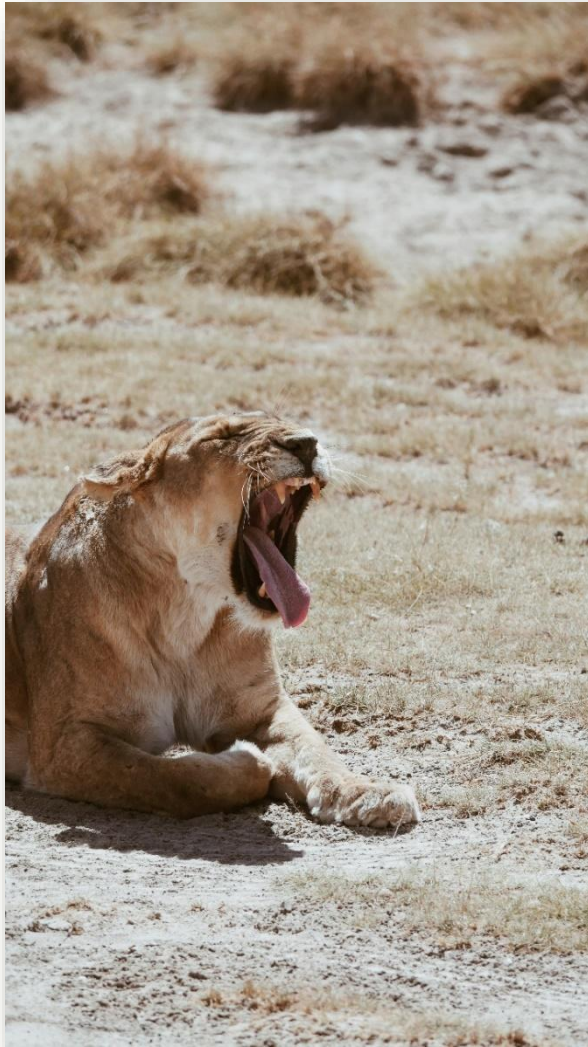
Day 6 – Thursday – Tarangire NP

Breakfast at the lodge. 08.00h Drive to Tarangire NP (2 hours). Morning and afternoon unlimited game viewing. Picnic lunch. Dinner and overnight at *Sangaiwe Tented Lodge*.

Day 7 – Friday – Korogwe village

06.30h Morning guided nature walk to the shores of Lake Burunge (1.5 hours). Breakfast at the camp. 09.00h Drive back to Arusha (2 hours). Continue to Korogwe village (5 hours), located midway between Arusha and Dar es Salaam. Picnic lunch. Dinner and overnight at *Korogwe Executive Lounge*.





Day 8 – Saturday – Mikumi NP

Breakfast at the lodge. 07.00h Drive to Mikumi NP (6 hours' drive), arriving for lunch at Camp Bastian. Afternoon guided village tour. Dinner and overnight at *Camp Bastian*

Day 9 – Mikumi NP

Full day unlimited game viewing in the reserve. All meals and overnight at *Camp Bastian*

Day 10 – Ruaha NP

Breakfast at the lodge. 08.00h Drive to Ruaha NP (6 hours' drive). Picnic lunch. Afternoon at leisure to relax at the camp. Dinner and overnight at *Tandala Tented Camp*.

Day 11 – Ruaha NP

Breakfast at the camp. Full day game viewing in the park in camp vehicle/guide. Picnic lunch. Dinner and overnight at *Tandala Tented Camp*.

Day 12 – Ruaha NP

Breakfast at the camp. Morning cultural tour – Maasai Boma, the local village, primary school and dispensary. Lunch at the camp. Afternoon game viewing in the park in camp vehicle/guide. Dinner and overnight at *Tandala Tented Camp*.

Day 13 – Udzungwa Mountains NP

Breakfast at the camp. 08.00h Drive to Udzungwa Mountains NP (7 hours' drive). Lunch at Crocodile Camp. Afternoon guided nature walk around the camp. Dinner and overnight at *Udzungwa Forest Camp*.

Day 14 – Udzungwa Mountains NP

Breakfast at the camp. Morning half day Sanje Waterfalls Hike and (*Optional afternoon Mang'ula Village Tour*). All meals and overnight at *Udzungwa Forest Camp*.

Day 15 – North Selous Game Reserve

Breakfast at the camp. 08.00h Drive to North Selous Game Reserve (8 hours' drive). Picnic lunch. Evening at leisure to relax. Dinner and overnight at *Sable Mountain Lodge*.

Day 16 – North Selous Game Reserve

Early morning guided bush walk with ranger from the camp. Return to the camp for breakfast. Morning/midday game drive in Northern Selous Game Reserve. Lunch at the camp. Evening guided Village Tour. Dinner and overnight at *Sable Mountain Lodge*.

Day 17 – East Selous Game Reserve

Breakfast at the lodge. Drive across the game reserve from north to east (2.5 hours' drive) with game viewing. Lunch at the Lake Manze Camp. Afternoon boat safari. Dinner and overnight at *Selous Wilderness Camp*.

Day 18 – East Selous Game Reserve

Pre-dawn guided walking safari from the camp. Morning/midday game viewing in the park. Lunch at the camp. Afternoon game viewing drive in the park. All meals and overnight at *Selous Wilderness Camp*.

Day 19 – Depart

Breakfast at the camp. Drive to Dar es Salaam. Picnic lunch en route. On arrival transfer to Hotel Blue Sapphire for day room. Later transfer back to the airport for outbound flight.

Note: Your safari ends there, but an add-on program could begin at this point...

Note: Age policy – children 12 – 15 years old accepted with accompanying adult. No upper limit. Guests older than 65 years of age at time of travel require a medical certificate stating guest is fit and healthy to join a group tour.

Price inclusions. airport transfer from Kilimanjaro International Airport to African View Lodge in non-private (shared) vehicle; transportation while on safari in non-private (shared) safari-equipped 4-wheel-drive Toyota Land Cruiser driven by English-speaking driver/guide (a window seat is guaranteed to each passenger); transfer from Arusha to Mikumi NP via Korogwe village in luxury minibus with air-conditioning (along an all-tarmac road); meals and accommodations as described in the itinerary; all entrance fees; bottled water/tea/coffee in the vehicle while on safari (*ATBGreenSafari*).

ATB GreenSafari ReduceReuseRecycle Package:

- Complimentary take-home reusable water bottle.
- Refillable in-car drinking water.
- Self-pack waste-reducing picnic lunches in reusable stainless steel Tiffin food containers.

Sustainable tea/coffee in-car-on-safari service – hot water stainless steel thermos, stainless steel tea/coffee mugs, stainless steel tea spoons, mason jar-packed tea/sugar bags, Coffee Press-prepared ground Tanzania coffee.

Number of participants: min. 1 – max. 6 Persons



Private Tours





(Central Serengeti)

4. Nov – 3 nights Serengeti Bush Camp (Central Serengeti)

Day 8 – Serengeti NP (Follow the Migration)

Full day unlimited game viewing in the park. All meals and overnight at a camp located in/close to the Migration Area.

Day 9 – Central Serengeti NP

Breakfast at the camp. Drive to Central Serengeti NP. Game viewing drive en route. Picnic lunch. Dinner and overnight at Serengeti Bush Camp.

Tanzania Wilderness Highlights

13-days **private tour** from/to Arusha [Standard Tour]

Day 1 – Arusha

Arrive at Kilimanjaro International Airport. Transfer to *African View Lodge* for overnight.

Day 2 – Tarangire NP

Breakfast at the lodge. Drive from Arusha to Tarangire NP. Lunch at the lodge. Picnic lunch. Dinner and overnight at *Sangaiwe Tented Lodge*.

Day 3 – Tarangire NP

Breakfast at the lodge. Full day unlimited game viewing. Picnic lunch. Dinner and overnight at *Sangaiwe Tented Lodge*.

Day 4 – Lake Manyara NP

Breakfast at the lodge. Drive from Lake Manyara NP. Morning and afternoon unlimited game viewing. Picnic lunch. Dinner and overnight at *Country Lodge*.

Day 5 – Lake Victoria

Breakfast at the lodge. Drive to Speke Bay Point on the shores of the vast inland sea of Lake Victoria. Game viewing in Serengeti NP and picnic lunch en route. Dinner and overnight at *Serenity on the Lake*.

Day 6 – Lake Victoria

06.30h 2-hour guided Nature Walk & Bird Watching tour (over 240 species of birds have been spotted). Breakfast at the lodge. 11.30h 2-hour guided Canoeing on the Lake. Lunch, dinner and overnight at *Serenity on the Lake*.

Day 7 – Serengeti NP (Follow the Migration)

Breakfast at the lodge. Drive to Serengeti NP. Picnic lunch and game drive en route. Dinner and overnight at a camp located in/close to the Migration Area.

1. Dec to Mar – 1-night Serengeti Bush Camp (Central Serengeti), 2 nights Ndutu Bush Camp (Lake Ndutu)
2. Apr to Jun – 3 nights Serengeti Bush Camp (Central Serengeti)
3. Jul to Oct – 2 nights Serengeti North Camp (North Serengeti), 1-night Serengeti Bush Camp

Day 10 – Ngorongoro Crater

Breakfast at the camp. Drive to Ngorongoro Crater for half day (5 hours) crater tour. Picnic lunch. Dinner and overnight at *Marera Valley Lodge*.

Day 11 – Lake Eyasi

Breakfast at the lodge. Drive to Lake Eyasi. Lunch at Lake Eyasi Safari Lodge. Afternoon guided lake shore nature walk and cultural tour of the Wadatoga community. Dinner and overnight at *Lake Eyasi Safari Lodge*.

Day 12 – Lake Eyasi

Pre-dawn tea/coffee. Early morning collected by your local guide and accompany the Wahadzabe tribes people on an hunting excursion. Return to the lodge for lunch. Afternoon at leisure to relax by the swimming pool. Dinner and overnight at *Lake Eyasi Safari Lodge*.

Day 13 – Depart

Breakfast at the lodge. Drive back to Arusha. Picnic lunch.

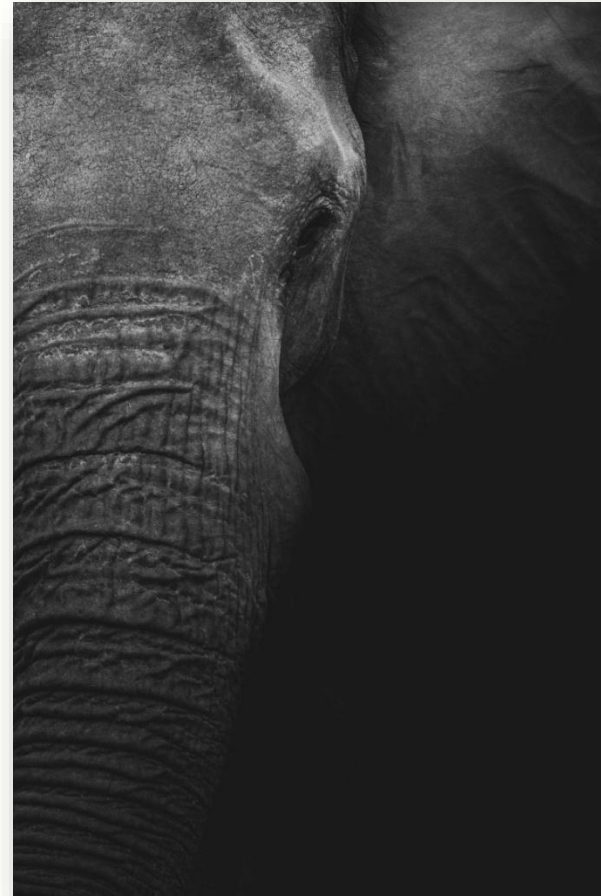
Note: Your safari ends there, but an add-on program could begin at this point...

Price inclusions. all transfers in Arusha in private vehicle; transportation while on safari in private safari-equipped 4-wheel-drive Toyota Land Cruiser driven by English-speaking driver/guide; meals and accommodations as described in the itinerary; all entrance fees; bottled water/tea/coffee in the vehicle while on safari (*ATBGreenSafari*).

ATB GreenSafari ReduceReuseRecycle Package:

- Complimentary take-home reusable water bottle.
- Refillable in-car drinking water.
- Self-pack waste-reducing picnic lunches in reusable stainless steel Tiffin food containers.

Sustainable tea/coffee in-car-on-safari service – hot water stainless steel thermos, stainless steel tea/coffee mugs, stainless steel tea spoons, mason jar-packed tea/sugar bags, Coffee Press-prepared ground Tanzania coffee.





Tanzania Wilderness Highlights:

13-days private tour from/to Arusha **[Premium Tour]**

Day 1 – Arusha

Arrive at Kilimanjaro International Airport. Transfer to *African View Lodge* for overnight.

Day 2 – Tarangire NP

Breakfast at the lodge. Drive from Arusha to Tarangire NP. Lunch at the camp. Picnic lunch. Dinner and overnight at *Tarangire View Camp*.

Day 3 – Tarangire NP

Breakfast at the lodge. Full day unlimited game viewing. Picnic lunch. Dinner and overnight at *Tarangire View Camp*.

- Optional Activities @ Tarangire View Camp (dependent on weather):

- Night drive (12 years and above) 207 USD per person

- Walking (16 years and above) 90 USD per person

Day 4 – Lake Manyara NP

Breakfast at the lodge. Drive from Lake Manyara NP. Morning and afternoon unlimited game viewing. Picnic lunch. Dinner and overnight at *Ngorongoro Farm House*.

Day 5 – Lake Victoria

Breakfast at the lodge. Drive to Speke Bay Point on the shores of the vast inland sea of Lake Victoria. Game viewing in Serengeti NP and picnic lunch en route. Dinner and overnight at *Speke Bay Lodge*.

Day 6 – Lake Victoria

06.30h 2-hour guided Bird Walk tour (over 240 species of birds have been spotted). Breakfast at the lodge. 11.30h 2-hour Lake Cruiser tour. Lunch, dinner and overnight at *Speke Bay Lodge*.

Day 7 – Serengeti NP **(Follow the Migration)**

Breakfast at the lodge. Drive to Serengeti NP. Picnic lunch and game drive en route. Dinner and overnight at a *camp located in/ close to the Migration Area*.

1. Dec to Mar – 1-night Serengeti Kati Kati Camp (**Central Serengeti**), 2 nights Ndutu Safari Lodge (**Lake Ndutu**)

2. Apr to Jun – 3 nights Serengeti Kati Kati Camp (**Central Serengeti**)

3. Jul to Oct – 2 nights Mara Kati Kati Camp (**North Serengeti**), 1-night Serengeti Kati Kati Camp (**Central Serengeti**)

4. Nov – 3 nights Serengeti Kati Kati Camp (**Central Serengeti**)

Day 8 – Serengeti NP **(Follow the Migration)**

Full day unlimited game viewing in the park. All meals and overnight at a *camp located in/ close to the Migration Area*.

Day 9 – Central Serengeti NP

Breakfast at the camp. Drive to Central Serengeti NP. Game viewing drive en route. Picnic lunch. Dinner and overnight at *Serengeti Kati Kati Camp*.

Day 10 – Ngorongoro Crater

Breakfast at the camp. Drive to Ngorongoro Crater for half day (5 hours) crater tour. Picnic lunch. Dinner and overnight at *Farm House Valley*.

Day 11 – Lake Eyasi

Breakfast at the lodge. Drive to Lake Eyasi. Lunch at Kisima Ngeda Tented Camp. Afternoon guided lake shore nature walk and cultural tour of the Wadatoga community. Dinner and overnight at *Kisima Ngeda Tented Camp*.

Day 12 – Lake Eyasi

Pre-dawn tea/coffee. Early morning collected by your local guide and accompany the Wahadzabe tribes people on an hunting excursion. Return to the lodge for lunch. Afternoon at leisure to relax by the swimming pool. Dinner and overnight at *Kisima Ngeda Tented Camp*.

Day 13 – Depart

Breakfast at the camp. Drive back to Arusha. Picnic lunch.

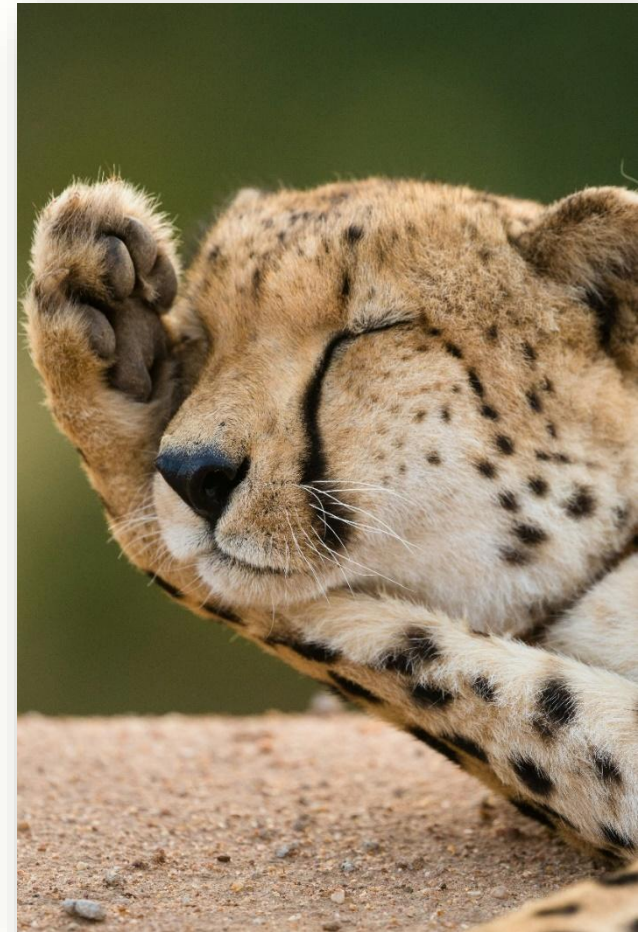
Note: Your safari ends there, but an add-on program could begin at this point...

Price inclusions. all transfers in Arusha in private vehicle; transportation while on safari in private safari-equipped 4-wheel-drive Toyota Land Cruiser driven by English-speaking driver/guide; meals and accommodations as described in the itinerary; all entrance fees; bottled water/tea/coffee in the vehicle while on safari (*ATBGreenSafari*).

ATB GreenSafari ReduceReuseRecycle Package:

- Complimentary take-home reusable water bottle.
- Refillable in-car drinking water.
- Self-pack waste-reducing picnic lunches in reusable stainless steel Tiffin food containers.

Sustainable tea/coffee in-car-on-safari service – hot water stainless steel thermos, stainless steel tea/coffee mugs, stainless steel tea spoons, mason jar-packed tea/sugar bags, Coffee Press-prepared ground Tanzania coffee.





Tanzania Southern Highlights:

9-day fly-in safari from/to Dar es Salaam **[Standard Tour]**

Day 1 – Dar es Salaam

Arrive at Dar es Salaam Julius K Nyerere International Airport. Transfer to *Mediterraneo Hotel* for overnight.

Day 2 – Mikumi NP

Breakfast at the hotel. Transfer to the airport. Depart on scheduled Safari Air Link flight to Mikumi NP 10.30h – 12.00h (*baggage allowance including all hand luggage 15 kg*). Lunch at the camp. Afternoon game drive. Dinner and overnight at *Camp Bastian*.

Day 3 – Mikumi NP

Morning and afternoon game drive. All meals and overnight at *Camp Bastian*.

Day 4 – Ruaha NP

Early morning game viewing drive in the park. Breakfast at the camp. Transfer to the airstrip. Depart on scheduled Safari Air Link flight to Ruaha NP 12.20h – 13.25h (*baggage allowance including all hand luggage 15 kg*). Lunch at the lodge. Afternoon game drive. Dinner and overnight at *Tandala Tented Camp*.

Day 5 – Ruaha NP

Morning and afternoon game drive. All meals and overnight at *Tandala Tented Camp*.

Day 6 – Selous NP

Early morning game viewing drive. Breakfast at the lodge. Transfer to the airstrip. Depart (with picnic lunch) on scheduled Safari Air Link flight to Selous NP 13.45h – 15.40h (*baggage allowance including all hand luggage 15 kg*). Dinner and overnight at *Selous Wilderness Camp (River View Tents)*.

Day 7 – Selous NP

Morning walking safari and afternoon boat safari (*subject to water levels in the river*). All meals and overnight at *Selous Wilderness Camp (River View Tents)*.

Note: Children below 16 not permitted to walk

Day 8 – Selous NP

Morning and afternoon game drive. All meals and overnight at *Selous Wilderness Camp (River View Tents)*.

Day 9 – Depart

Breakfast at the camp. Morning game drive. Lunch at the camp. Transfer to the airstrip. Depart on scheduled flight to Dar es Salaam 16.00h – 16.35h (*baggage allowance including all hand luggage 15 kg*). Note: Your safari ends there, but an add-on program could begin at this point

Price inclusions. all transfers in Dar es Salaam in non-private (shared) vehicle; transportation while on safari in non-private (shared) open adapted 4WD camp vehicles driven by local English-speaking driver/guides; meals and accommodations as described in the itinerary; laundry while on safari; all entrance fees; scheduled flights from (1) Dar es Salaam to Mikumi (2) Mikumi to Ruaha (3) Ruaha to Selous (4) Selous to Dar es Salaam.

Tanzania Southern Highlights:

9-day **fly-in safari** from/to Dar es Salaam **[Premium Tour]**

Day 1 – Dar es Salaam

Arrive at Dar es Salaam Julius K Nyerere International Airport. Transfer to *Mediterraneo Hotel* for overnight.

Day 2 – Mikumi NP

Breakfast at the hotel. Transfer to the airport. Depart on scheduled Safari Air Link flight to Mikumi NP 10.30h – 12.00h (*baggage allowance including all hand luggage 15 kg*). Lunch at the camp. Afternoon game drive. Dinner and overnight at *Vuma Hills Tented Camp*.

Day 3 – Mikumi NP

Morning and afternoon game drive. All meals and overnight at *Vuma Hills Tented Camp*.

Day 4 – Ruaha NP

Early morning game viewing drive in the park. Breakfast at the camp. Transfer to the airstrip. Depart on scheduled Safari Air Link flight to Ruaha NP 12.20h – 13.25h (*baggage allowance including all hand luggage 15 kg*). Lunch at the lodge. Afternoon game drive. Dinner and overnight at *Ruaha River Lodge*.

Day 5 – Ruaha NP

Morning and afternoon game drive. All meals and overnight at *Ruaha River Lodge*.

Day 6 – Selous NP

Early morning game viewing drive. Breakfast at the lodge. Transfer to the airstrip. Depart (with picnic lunch) on scheduled Safari Air Link flight to Selous NP 13.45h – 15.40h (*baggage allowance including all hand luggage 15 kg*). Dinner and overnight at *Rufiji River Camp*.

Day 7 – Selous NP

Morning walking safari and afternoon boat safari (*subject to water levels in the river*). All meals and overnight at *Rufiji River Camp*.

Note: Children below 16 not permitted to walk

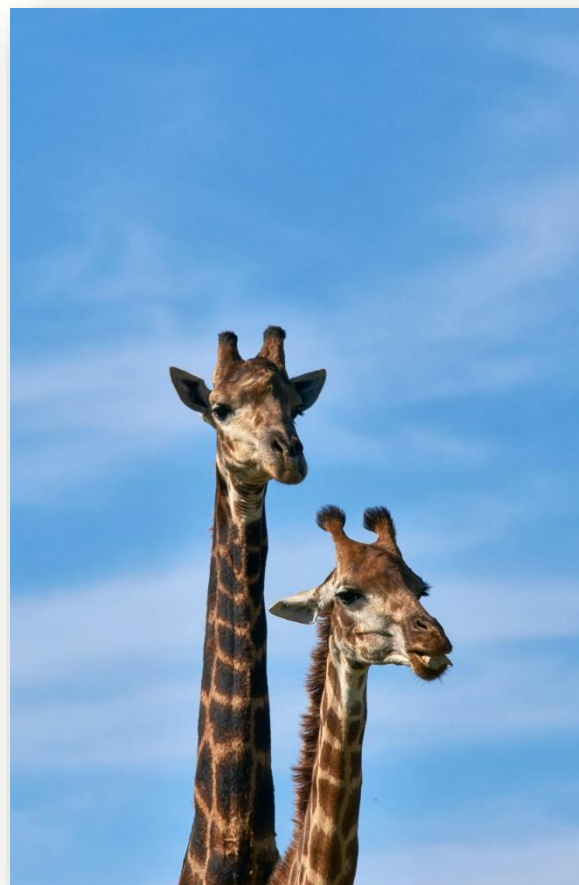
Day 8 – Selous NP

Morning and afternoon game drive. All meals and overnight at *Rufiji River Camp*.

Day 9 – Depart

Breakfast at the camp. Morning game drive. Lunch at the camp. Transfer to the airstrip. Depart on scheduled flight to Dar es Salaam 16.00h – 16.35h (*baggage allowance including all hand luggage 15 kg*). Note: Your safari ends there, but an add-on program could begin at this point...

Price inclusions. all transfers in Dar es Salaam in non-private (shared) vehicle; transportation while on safari in non-private (shared) open adapted 4WD camp vehicles driven by local English-speaking driver/guides; meals and accommodations as described in the itinerary; laundry while on safari; all entrance fees; scheduled flights from (1) Dar es Salaam to Mikumi (2) Mikumi to Ruaha (3) Ruaha to Selous (4) Selous to Dar es Salaam.





Cheetah Safari:

10-days **private tour** from Arusha/to Zanzibar

- **Prices for 1 – 7 persons**
- **Ideal for individuals or small parties, with limited time/budget**
- **Ideal for arrival at Kilimanjaro International Airport on early morning flight e.g. Turkish Airlines** making it possible to replace at a supplement the first night in Arusha with an additional in Zanzibar
- **4x4 Safari vehicle (Land Cruiser) with English-speaking driver-guide**
- **A glimpse of Tanzania's best Northern wildlife safari parks – Lake Manyara – Ngorongoro – Serengeti, with an extension to Zanzibar Island.**
- **Special highlights** – wildebeest calving season in south Serengeti around Lake Ndutu from mid-December to March; big game viewing all year round in Central Serengeti; migration viewing in Northern Serengeti; **scheduled flight** from Serengeti to Zanzibar.
- **4 nights in “affordable category” lodges / tented camps; 1 night at Tembo House Hotel in Stone Town and 4 nights at Nur Beach Hotel in sea view bungalow.**
- **4x4 Safari vehicle (Land Cruiser) with English-speaking driver-guide**

Day 1 – Arusha

Arrive at Kilimanjaro International Airport. Transfer to *African View Lodge* for overnight.

Day 2 – Lake Manyara NP

Breakfast at the lodge. 07.30h drive to Lake Manyara NP (2.5 hour's drive) for morning and afternoon unlimited game viewing in the park. Picnic lunch. Continue to Karatu (30 minutes' drive) for dinner and overnight at *Country Lodge*.

Day 3 – Ngorongoro Crater

Breakfast at the lodge. 07.30h Descend into the crater floor for half day (5 hours) crater tour. Picnic lunch. 13.30h drive to Serengeti NP (3 hour's drive) for dinner and overnight at *Serengeti Bush Camp*.

Day 4 – Serengeti NP

06.30h early morning game viewing. Breakfast at the camp. 10.00h drive to Kogatende Area in North Serengeti (2 hour's drive) with game viewing and picnic lunch en route. Dinner and overnight at *Serengeti North Bush Camp*.

1. **Follow the Migration:**

Dec to Mar – 1-night Serengeti Bush Camp (Central Serengeti), 1-night Ndutu Bush Camp (Lake Ndutu)

2. *Apr to May – 2 nights Serengeti Bush Camp (Central Serengeti)*

3. Jun to Oct – 1 nights Serengeti North North Camp (**North Serengeti**), 1-night Serengeti Bush Camp (**Central Serengeti**)
4. Nov – 2 nights Serengeti Bush Camp (**Central Serengeti**)

Day 5 – Stone Town

06.30h early morning game viewing. Breakfast at the camp. 10.30h transfer to nearby airstrip. Depart on scheduled Flight Link flight to Zanzibar via Arusha 11.30h – 13.45h (*baggage allowance including all hand luggage 20 kg*). On arrival at Zanzibar International Airport transfer to *Tembo House Hotel*. Overnight at *Tembo House Hotel*.

Note: Tembo House Hotel does not serve alcoholic drinks. Lunch and dinner (alcoholic drinks also served) can optionally be taken at the famous Livingstone Beach Restaurant www.livingstonerestaurant.com, next door to Tembo House Hotel or at 6 Degrees South Restaurant www.6degreessouth.co.tz.

Day 6 – Zanzibar

Breakfast at the hotel. 11.00h transfer from Tembo House Hotel to *Nur Beach Hotel*. *Reminder of the day at leisure to relax*. Dinner and overnight Nur Beach Hotel (*see view rooms*).

Day 7 – Zanzibar

Breakfast at the hotel. Full day at leisure to relax by the swimming pool or on the beach. *Lunch is not included*. Dinner and overnight at *Nur Beach Hotel*. (*see view rooms*)

Day 8 – Zanzibar

Breakfast at the hotel. Full day at leisure to relax by the swimming pool or on the beach. *Lunch is not included*. Dinner and overnight at *Nur Beach Hotel*. (*see view rooms*)

Day 9 – Zanzibar

Breakfast at the hotel. Full day at leisure to relax by the swimming pool or on the beach. *Lunch is not included*. Dinner and overnight at *Nur Beach Hotel*. (*see view rooms*)

Day 10 – Depart

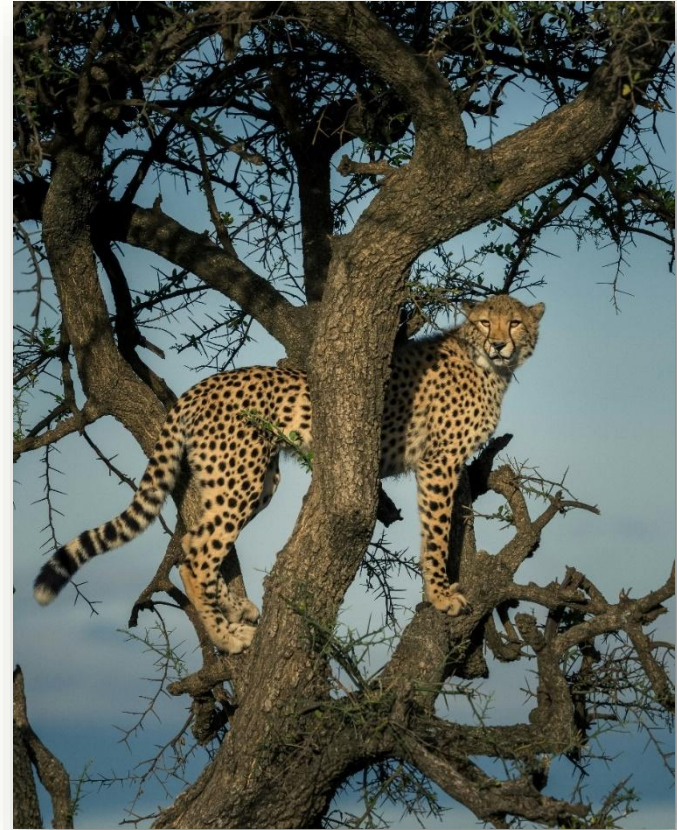
Breakfast at the hotel. Transfer to Zanzibar International Airport. Homebound departure flight.

Note: It is possible to book extra nights at Nur Beach Hotel or The Loop...

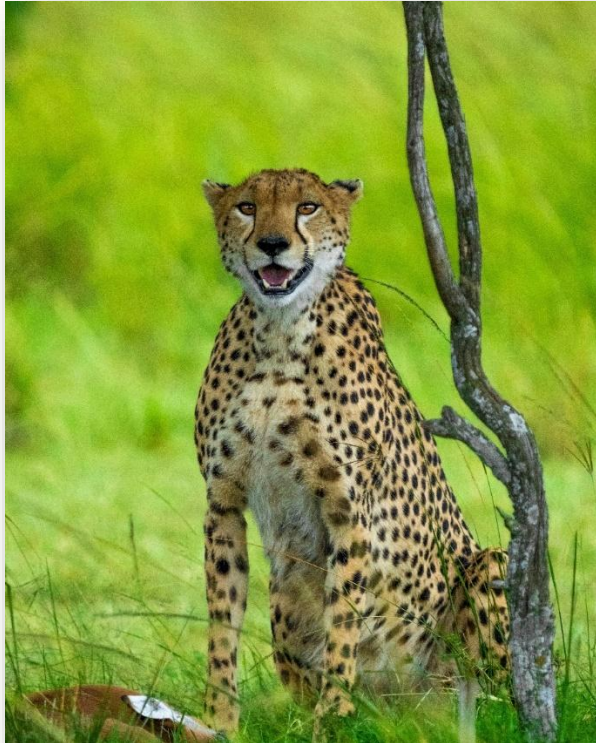
Price inclusions. all transfers in Arusha and Zanzibar in private vehicle; transportation while on safari in private safari-equipped 4-wheel-drive Toyota Land Cruiser driven by English-speaking driver/guide; meals and accommodations as described in the itinerary; all entrance fees; bottled water/tea/coffee in the vehicle while on safari (*ATBGreenSafari*); scheduled flight from Serengeti to Zanzibar.

ATB GreenSafari ReduceReuseRecycle Package:

- Complimentary take-home reusable water bottle.
- Refillable in-car drinking water.



- Self-pack waste-reducing picnic lunches in reusable stainless steel Tiffin food containers.
- Sustainable tea/coffee in-car-on-safari service – hot water stainless steel thermos, stainless steel tea/coffee mugs, stainless steel tea spoons, mason jar-packed tea/sugar bags, Coffee Press-prepared ground Tanzania coffee.



Wildbeest Safari (WLB):

7-days private tour – lodge safari from/to Arusha

- Prices for 1 – 7 persons
- Ideal for individuals or small parties, with limited time/budget
- 4x4 Safari vehicle (Land Cruiser) with English-speaking driver-guide.
- Window seat guarantee
- 6 nights in “superior quality budget” lodges / tented camps

Day 1 – Arusha

Arrive at Kilimanjaro International Airport. Transfer to *African View Lodge* for dinner and overnight.

Day 2 – Tarangire NP

Breakfast at the lodge. 07.30h drive to Tarangire NP (2 hours’ drive) for morning and afternoon unlimited game viewing. Picnic lunch. Dinner and overnight at *Sangaiwe Tented Lodge*.

Day 3 – Lake Manyara NP

Breakfast at the camp. Drive to Lake Manyara NP (1-hour drive) for morning and afternoon unlimited game viewing. Picnic lunch. Dinner and overnight at *Kankari Lodge*.

Day 4 – Ngorongoro Crater

Breakfast at the lodge. 07.30h Descend into the crater floor for half day (5 hours) crater tour. Picnic lunch. 13.30h drive to Serengeti NP (3 hour’s drive) for dinner and overnight at *Thorn Tree Camp*.

Day 5 – Serengeti NP

Breakfast at the camp. Full day unlimited game viewing. Picnic lunch. Dinner and overnight at *Thorn Tree Camp*.

Day 6 – Karatu

Breakfast at the camp. 09.00h drive to Karatu. Game viewing in Serengeti NP and picnic lunch en route. Dinner and overnight at *Marera Valley Lodge*.

Day 7 – Depart

Breakfast at the lodge. Drive back to Arusha. Picnic lunch. Transfer back to Kilimanjaro International Airport.

Note: Your safari ends there, but an add-on program could begin at this point...

Price inclusions. transfer from Kilimanjaro International Airport to African View Lodge in private vehicle; transportation while on safari in private safari-equipped 4-wheel-drive Toyota Land Cruiser driven by English-speaking driver/guide; meals and accommodations as described in the itinerary; all entrance fees; bottled water/tea/coffee in the vehicle while on safari (*ATBGreenSafari*).

ATB GreenSafari ReduceReuseRecycle Package:

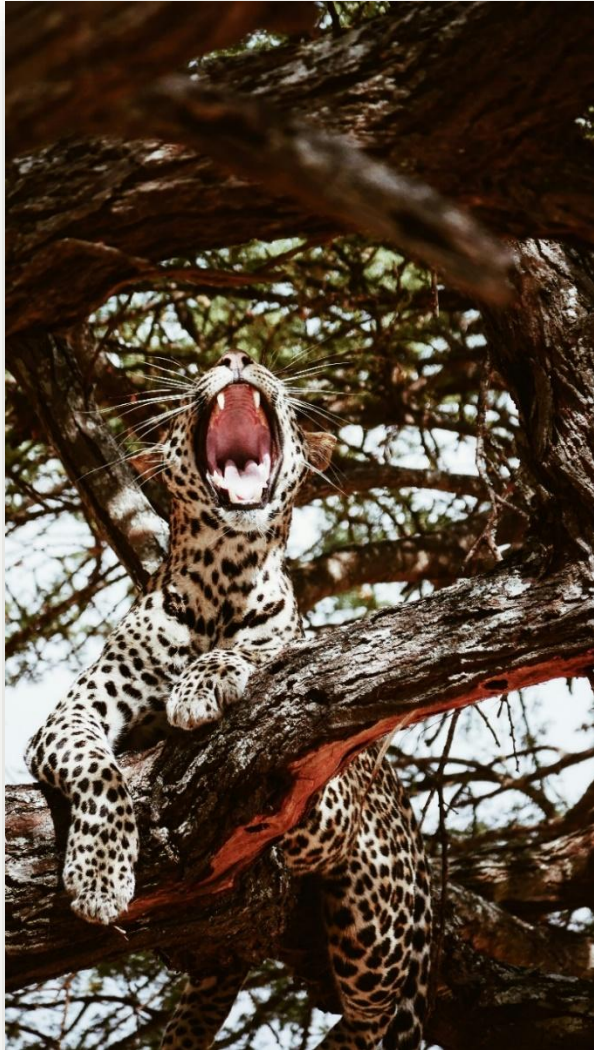
- Complimentary take-home reusable water bottle.
- Refillable in-car drinking water.
- Self-pack waste-reducing picnic lunches in reusable stainless steel Tiffin food containers.

Sustainable tea/coffee in-car-on-safari service – hot water stainless steel thermos, stainless steel tea/coffee mugs, stainless steel tea spoons, mason jar-packed tea/sugar bags, Coffee Press-prepared ground Tanzania coffee.

Tanzania Migration Classic (TMC):

7-days private tour from/to Arusha

- **Guaranteed departure from 1 person only**
- **Small group – max 6 persons (one vehicle only)**
- **4x4 Safari vehicle (Land Cruiser) with English-speaking driver-guide**
- **Window seat guarantee**
- ***Tanzania Migration Classic** is a carefully designed safari that visits Tanzania's renowned Northern Circuit wildlife destinations of Lake Manyara or Tarangire, Ngorongoro and Serengeti. It is a timeless classic for the first-time safari holiday traveler and even repeat traveler. In this safari, Africa Travel Bureau, strives to bring the travelers as closest as possible to be amongst the great herds and best game viewing areas depending on the time of the year and the rains. For this reason, Africa Travel Bureau, also uses classic wilderness tented mobile camps in all the locations – these camps are seasonal and move depending on the animal migrations to be located in close proximity with the game.*
 - *Tarangire National Park (June to October) – is the main dry season – and is the best period to spot wildlife when it migrates into the park – around the Tarangire River.*
 - *Lake Manyara National Park (December to March) – the bulk of the migration slowly starts to move out of Tarangire National Park towards the north into Lake Manyara National Park and the surrounding wildlife dispersal areas.*
 - *Serengeti/Masai Mara annual animal migration – mid-December to May – Southern Serengeti around Lake Ndutu; June – around the Seronera Area of Central Serengeti; July – the migration is on their way north through the western corridor; August to September – Masai Mara; October – the migration re-enters the Serengeti at the north; November – mid-December – around the Seronera Area of Central Serengeti.*
- **5 nights in middle class lodges / tented camps #Sustainable Tourism**
- **1 flight Serengeti to Arusha**
- **Cultural & Nature Activities** (all activities are weather dependent)
 - Maasai Medicine Walk in Esilalei Maasai Village (Isoitok Camp)



route. Dinner and overnight *Serengeti Wilderness Camp*.

Day 6 – Serengeti NP [Follow the Migration]

- Bush lunch in Esilalei Maasai Village (Isoitok Camp)
- Maasai Boma in Esilalei Maasai Village (Isoitok Camp)
- Walking Safari in Tarangire NP (Tarangire View Camp)
- Night game drive in Tarangire NP (Tarangire View Camp)
- Walking Safari in Serengeti

- **Wide range of pre and post safari add-ons**

Day 1 – Arusha

Arrive at Kilimanjaro International Airport. Transfer to *Rivertrees Country Inn (Garden Rooms)* for overnight.

Day 2 – Lake Manyara NP (November – March Lake Manyara migration season)

Breakfast at the lodge. Drive Lake Manyara NP. Morning and afternoon unlimited game viewing. Picnic lunch. Dinner and overnight at *Isoitok Camp (deluxe tents)*.

Day 3 – Lake Manyara NP

Breakfast at the camp. Morning guided Maasai Medicine Walk (approximately 2 hours) – learn about the different root and plant extracts still being used by the Maasai on a daily basis. Visit an Orpul area where young warriors learn an age old tradition from the elders and the medicine man of the village – gain a deeper understanding of the real Maasai culture. Head across to shady location adjacent to Isoitok Camp (short hike) to enjoy a bush lunch surrounded by nature with excellent views of Lake Manyara and the Rift Valley. 16.30h visit a Maasai Boma (approximately 1 hour) – take a look behind the scenes and experience the daily living of the Maasai. Learn about social/family structure, marriage, roles and responsibilities. Meet with the Maasai women and their children. Dinner and overnight at *Isoitok Camp (deluxe tents)*.

Day 2 – Tarangire NP (June – October Tarangire migration season)

Breakfast at the lodge. Drive Lake Tarangire NP. Morning and afternoon unlimited game viewing. Lunch, dinner and overnight at *Tarangire View Camp*.

Day 3 – Tarangire NP

Tea/coffee served. 06.30h guided walking safari in the park (2 hours). Return to the camp for breakfast. Morning, afternoon and night game viewing. Lunch, dinner and overnight at *Tarangire View Camp*.

Day 4 – Ngorongoro Crater

Breakfast at the camp. Drive to Ngorongoro Crater. Morning half day (5 hours) crater tour. Dinner and overnight *Ang'ata Ngorongoro Camp*.

Day 5 – Central Serengeti NP

Breakfast at the camp. Drive to Central Serengeti NP. Game viewing and picnic lunch en

Tea/coffee served. Early morning walking safari (1.5 hours). Breakfast at the camp. Full day unlimited game viewing in the park and picnic lunch en route. Dinner and overnight at a *camp located in/close to the Migration Area*.

Note: Only children above 16 years old are permitted to participate in nature walk.

Day 7 – Serengeti NP [Follow the Migration]

Full day unlimited game viewing in the park. All meals and overnight at Dinner and overnight at a *camp located in/close to the Migration Area*.

Day 5 – Day 7 – Serengeti NP (Follow the Migration)

Dec to Mar – 2 nights Serengeti Ndutu Wilderness Camp (Lake Ndutu), 1 night Serengeti Wilderness Camp (Central Serengeti)

1. *Apr to May – This tour does not operate during the ‘long’ rainy season*
2. *Jun – 3 nights Serengeti Wilderness Camp (Central Serengeti)*
3. *Jul to Oct – 1 night Serengeti Bush Camp (Central Serengeti), 2 nights Serengeti North Wilderness Camp (North Serengeti)*
4. *Nov – 3 nights Serengeti Wilderness Camp (Central Serengeti)*

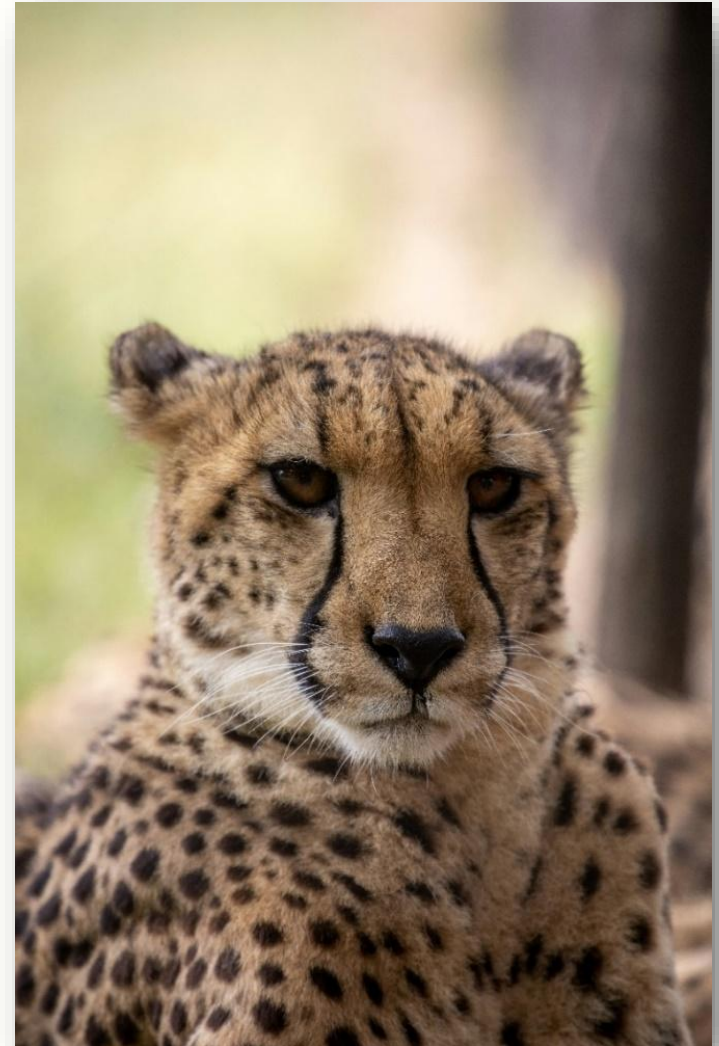
Day 8 – Depart

Breakfast at the camp. Transfer to the nearest airstrip. Depart on scheduled Flightlink to Arusha 11.30h – 12.45h (*baggage allowance including all hand luggage 25 kg*). Meet, greet and transfer to Kilimanjaro International Airport for homebound departure flight.

Note: Your safari ends there, but an add-on program could begin at this point...

Price inclusions. transportation while on safari in non-private (shared) safari-equipped 4-wheel-drive Toyota Land Cruiser driven by English-speaking driver/guide (a window seat is guaranteed to each passenger); meals and accommodations as described in the itinerary; all entrance fees; bottled water/tea/coffee in the vehicle while on safari; scheduled flight from Serengeti to Arusha.

Other inclusions. Serengeti Wilderness Camp, Serengeti Ndutu Wilderness Camp, Serengeti North Wilderness Camp – local beers, house wines, sodas as well as tea/coffee/water throughout the day.





Mountain Climbing

Marangu Route

Mount Kilimanjaro Climb

8-days from/to Arusha

Sometimes known as the 'Coca Cola' route, because it is the most popular route up the mountain, the Marangu Route is in fact followed by ninety percent of all climbers. It has a well-defined path, which has been well set out and where most obstacles have been modified to make them 'climber friendly'. Accommodation on this route is in purpose-built mountain huts providing adequate shelter and even bottled water, beer and soft drinks (at high altitude prices!).

Day 1 – Moshi

Arrive at Kilimanjaro International Airport and non-private hotel shuttle bus transfer to *Springlands Hotel* for overnight.

Day 2 – Mandara Hut

Breakfast at Springlands Hotel . Drive to Kilimanjaro National Park Gate at Marangu for the first section of the climb through the montane forest to Mandara Hut at 9000ft/2750m, taking 3 to 4 hours. Overnight at *Mandara Hut*.

Day 3 – Horombo Hut

Leaving the forest you trek along a good path through open grassy moorland to reach Horombo Hut at 12000ft/3700m, taking 5 to 7 hours. Overnight *Horombo Hut*.

Day 4 – Horombo Hut

Day spent at Horombo Hut to acclimatize.

Day 5 – Kibo Hut

Continue ascending past “the last water point” traversing the saddle between Kibo and Mawenzi to Kibo Hut at 15,000ft/4700m, taking 5 to 7 hours. Overnight *Kibo Hut*.

Day 6 – Horombo Hut

An early start for the summit on steep and heavy scree up to Gillman's Point at 18640ft/5681m on the crater rim to arrive in time for sunrise. Continue onto

Uhuru Peak the highest point in Africa at 19340ft/5896m. Descend to Horombo Hut for overnight taking 7 to 8 hours ascent and 4 to 7 hours descent. Overnight *Horombo Hut*.

Day 7 – Moshi

Descend the mountain to the Park Gate taking 5 to 7 hours to be met and transferred to *Springlands Hotel* for overnight.

Day 8 – Depart

Breakfast at Springlands Hotel. Departure as per plan.

Price inclusions. All transfers in non-private hotel shuttle bus; 3 meals per day on the mountains; treated drinking water; accommodations as described in the itinerary; all entrance fees; hut fees; all mountain equipment; cook; guide; porters; rescue fees; complimentary dinner with one drink (beer or soft drink) at Springlands Hotel on the last night.

Machame Route Mount Kilimanjaro Climb

9-days from/to Arusha

One day longer on trek, climbing a natural, rather than manmade path, the Machame Route is a more demanding (hence, fondly christened the 'whiskey route') but much quieter and scenic route up the mountain. Overnights are spent camping in tents which are carried and pitched by the accompanying porters. Highlights of this route are the Shira Plateau, Barranco Valley wall and the Karanga Valley reaching the summit via Stella Point.

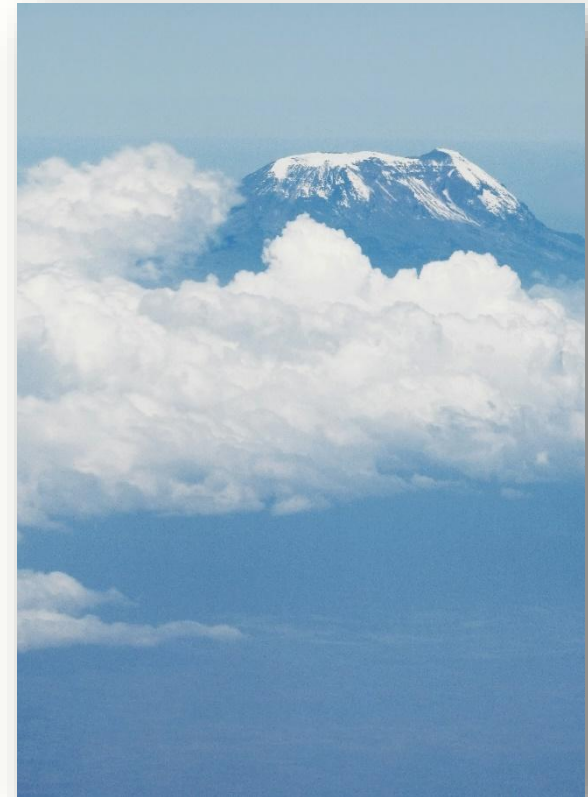
Day 1 – Moshi

Arrive at Kilimanjaro International Airport and non-private hotel shuttle bus transfer to *Springlands Hotel* for overnight.

Day 2 – Machame Camp

Breakfast at Springlands Hotel. Drive to Kilimanjaro National Park Gate at Machame for the first section of the climb through the montane forest to Machame Camp at 10000ft/3000m, taking 5 to 7 hours. Overnight at *Machame Camp*.

Day 3 – Shira Camp





Following the steep ridge and across heath and moorland to ‘picnic rock’ and the Shira Plateau, to Shira Campsite at 12500ft/3800m for overnight camp taking 5 to 7 hours. Overnight *Shira Camp*.

Day 4 – Barranco Camp

Heading towards Kibo, crossing a broad valley and climbing to a ridge crest, crossing scree slopes and a river valley to reach Barranco Campsite 13000ft/3900m for overnight camping taking 5 to 7 hours. Overnight *Barranco Camp*.

Day 5 – Karanga Valley Camp

Cross the floor of the Great Barranco Valley, up the Barranco Wall to the Karanga river 14800ft/4000m – the last water point on this route for overnight camping taking 4 to 5 hours. Overnight *Karanga Valley Camp*.

Day 6 – Barafu Camp

A steep climb over rocky slabs to Barafu Campsite at 15500ft/4600m for overnight camp taking 3 to 4 hours. Overnight *Barafu Camp*.

Day 7 – Mweka Camp

An early start for the summit – Uhuru Peak the highest point in Africa at 19340ft/5896m taking 6 to 7 hours. Descend via Barafu Campsite through the forest to Mweka Campsite at 10000ft/3000m for overnight camp – taking 5 to 7 hours. Overnight *Mweka Camp*.

Day 8 – Moshi

Descend through the forest to the park gate at Mweka Wildlife College taking 3 to 4 hours to be met and transferred to *Springlands Hotel* for overnight.

Day 9 – Depart

Breakfast at Springlands Hotel. Departure as per plan.

Price inclusions. All transfers in non-private hotel shuttle bus; 3 meals per day on the mountains; treated drinking water; accommodations as described in the itinerary; all entrance fees; camping fees; all mountain equipment; cook; guide; porters; rescue fees; complimentary dinner with one drink (beer or soft drink) at Springlands Hotel on the last night.

Lemosho Route Mount Kilimanjaro Climb

9-days from/to Arusha

This route starts at an altitude of 11600ft/3500m and should only be attempted by trekkers who are already acclimatized or know from previous experience that they can tolerate altitude. From the trailhead the trail heads east across the centre of the Shira Plateau, where it is often likely to spot big game, such as elephant and buffalo. The route then joins up with the Machame Route at Shira Camp and approaches the summit via Stella Point descending via Mweka Camp.

Day 1 – Moshi

Arrive at Kilimanjaro International Airport and non-private hotel shuttle bus transfer to *Springlands Hotel* for overnight.

Day 2 – Mti Mkubwa (Big Tree) Camp

Breakfast at Springlands Hotel . Drive to Kilimanjaro National Park Gate at Londorossi for the first section of the climb through the lush forest to reach Mti Mkubwa (Big Tree) Camp close to the gate at 9000ft/2750m taking 4 to 5 hours. Overnight *Mti Mkubwa (Big Tree) Camp*.

Day 3 – Shira One Camp

Continue through the forest on to the Shira Plateau to reach Shira One Campsite at 12,500ft/3800m for overnight camp taking 5 to 6 hours. Overnight *Shira One Camp*.

Day 4 – Shira Two Camp

Continue hike east across the Shira Plateau past the Shira Cathedral towards Shira Two Camp. We only gain 330m in elevation – this allows us to acclimatize slowly to the altitude. The views of the plateau are nothing less than spectacular. Overnight at *Shira Two Camp*.

Day 5 – Barranco Camp

Heading eastwards, continue ascending through the dry landscape before reaching Barranco Campsite at 13,000ft/3900m for overnight camp taking 5 – 7 hours. Overnight *Barranco Camp*.

Day 6 – Barafu Camp



The path climbs steeply out of the Barranco Valley, crosses the Karanga Valley, then turns north to reach Barafu Campsite at 15500ft/4600m for overnight camp taking 3 to 4 hours. Overnight *Barafu Camp*.

Day 7 – Mweka Camp

A long day and an early start to reach the crater rim at Stella Point in time for sunrise. Continue on to Uhuru Peak 19340ft/5896m the highest point in Africa. Descend to Mweka Campsite at 10,000ft/3000m for overnight camp taking 6 to 8 hours descent. Overnight *Mweka Camp*.

Day 8 – Moshi

Descend through the forest to the park gate at Mweka Wildlife College taking 3 to 4 hours to be met and transferred to *Springlands Hotel* for overnight.

Day 9 – Depart

Breakfast at Springlands Hotel. Departure as per plan.

Price inclusions. All transfers in non-private hotel shuttle bus; 3 meals per day on the mountains; treated drinking water; accommodations as described in the itinerary; all entrance fees; camping fees; all mountain equipment; cook; guide; porters; rescue fees; complimentary dinner with one drink (beer or soft drink) at Springlands Hotel on the last night.



Rongai Route Mount Kilimanjaro Climb

8-days from/to Arusha

This route is fast gaining in popularity and is considered to be one of the easiest routes up the mountain. It is the only route starting from the north side of the mountain at Rongai a small village close to the Kenya border. The climbing conditions are drier on the northern side of the mountain and there are spectacular sweeping views over the broad flat Maasai lands. Overnights are spend camping in tents. The summit is reach via the east side of Kibo and the descent is via the Marangu route.

Day 1 – Moshi

Arrive at Kilimanjaro International Airport and non-private hotel shuttle bus transfer to *Springlands Hotel* for overnight.

Day 2 – First Cave Camp (Kikelewa)

Breakfast at Springlands Hotel . Drive to Kilimanjaro National Park Gate at Rongai. The climb begins at the village of Nale Moru 1950m through cultivated land before entering the pine forest. Watch out for the Kilimanjaro Colobus monkeys in the tree tops with their white fringed ‘capess’ and tail. Taking 3 – 4 hours the first camp is on the edge of the moorland zone where the forest begins to thin out at First Cave at 8500ft/2600m. Overnight *First Cave Camp (Kikelewa)*.

Day 3 – Second Cave Camp (Kikelewa)

The morning walk is a steady ascent up to the Second Cave at 11300ft/3450m with superb views of Kibo and the eastern ice fields on the crater rim. Pushing on to reach Third Cave taking 3 to 4 hours at 12800ft/3800m for overnight camp. Overnight *Third Cave Camp (Kikelewa)*.

Day 4 – Mawenzi Tarn Camp

A short but steep climb up grassy slopes offers superb views of this wilderness area. The vegetation zone ends shortly before we reach our next camp at Mawenzi Tarn 4735m, taking 3 to 4 hours spectacularly situated beneath towering spires of Mawenzi peak. Spend the afternoon acclimatizing and exploring the area. Overnight *Mawenzi Tarn Camp*.

Day 5 – Kibo Camp

Continue ascending on the east side of Kibo crossing the saddle between Mawenzi and Kibo taking 4 to 5 hours to reach Kibo Hut at 15000ft/4700m. The remainder of the day is spent resting in preparation for the final ascent which begins around midnight. Overnight *Kibo Camp*.

Day 6 – Horombo Camp

An early start for the summit on steep heavy scree to arrive at Gilman’s Point at 18640/5681m in time to see the sun rise. Those who want to reach the highest point in Africa can take approximately three hour excursion to Uhuru Peak 19340ft/5896m passing close to the spectacular glaciers and ice cliffs that still occupy most of the summit area. The descent to Kibo is surprisingly fast and after some refreshment, continue the descent to reach the final campsite at Horombo at 12000ft/3700m taking 11 to 15 hours. Overnight *Horombo Hut*.

Day 7 – Moshi

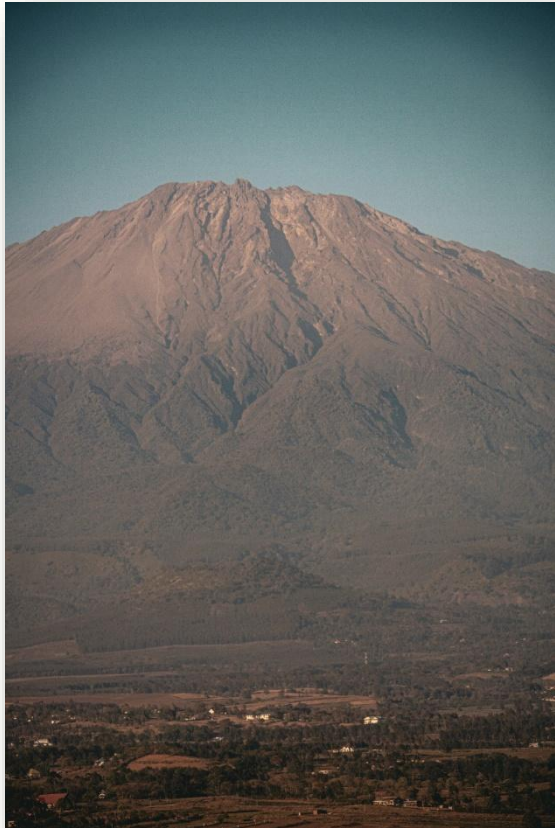
A steady descent down through the moorland to Mandara Hut and then downward through the lush forest on a good path to the National Park gate at Marangu (1830m) taking 5 to 7 hours to be met and transferred to *Springlands Hotel* for dinner and overnight stay.

Day 8 – Depart

Breakfast at Springlands Hotel. Departure as per plan.



Price inclusions. All transfers in non-private hotel shuttle bus; 3 meals per day on the mountains; treated drinking water; accommodations as described in the itinerary; all entrance fees; camping fees; all mountain equipment; cook; guide; porters; rescue fees; complimentary dinner with one drink (beer or soft drink) at Springlands Hotel on the last night.



Mount Meru Climb

4-days from/to Arusha

Mount Meru is the second highest mountain in Tanzania, at 14979ft/4566m. and is overshadowed by Kilimanjaro, its famous neighbour. Not only is it a rewarding and picturesque trek in its own right, providing spectacular view of Mount Kilimanjaro and the surrounding country side, but it is also very good acclimatization for a Kilimanjaro trek. A trek involves hiking through the forest and grassland on the mountain's lower slopes, followed by a dramatic and exhilarating ridge-walk to the summit. Mount Meru is situated in Arusha National Park.

Day 1 – Miriakamba Hut

Transfer to the Arusha National Park gate at Momella. For the first section of the climb through the lush forest, crossing the Ngare Nanyuki river to reach Miriakamba Hut at 8337ft/2541m for overnight taking 4 to 5 hours. Overnight *Miriakamba Hut*.

Day 2 – Saddle Hut

Continue to ascend steeply through the pleasant forest glades and giant heather to reach Saddle Hut at 11,713ft/3570m taking 2 to 3 hours. From here it is possible to take a side trek to reach the summit of Little Meru 12,450ft/3794m and return to Saddle Hut in about 2 hours, for overnight *Saddle Hut*.

Day 3 – Miriakamba Hut

An early start to reach Rhino Point and then on to the summit at 14,981ft/4566m to see the sun rise behind Mount Kilimanjaro, before descending to *Miriakamba Hut* for overnight stay.

Day 4 – Descend

Descend to Momella Gate for onward transfer.

Price inclusions. 3 meals per day on the mountains; treated drinking water; accommodations as described in the itinerary; all entrance fees; camping fees; all mountain equipment; cook; guide; porters; rescue fees.

Other inclusions. N/A

PACK LIST recommendations – Mount Kilimanjaro + Mount Meru

- Backpack, duffel bag or other soft bag ca. 65 litres + (recommended: waterproof duffel bag)
- Warm sleeping bag (comfort temperature minus 10 (Mount Kilimanjaro) / minus 7 (Mount Meru) degrees C)
- Isolation mattress
- Day pack (approx. 35 litres)
- Warm clothing for temperatures up to minus 20 (Mount Kilimanjaro) / minus 10 (Mount Meru) degrees C. (several thinner ones, worn “onion-style” recommended)
- Rainproof gear – either a trouser and jacket set or a poncho with gaiter set
- Good, worn-in hiking boots
- Spare pair of shoes i.e. trainers or crocs
- A pair of very warm socks
- Warm hat “Balaclava”
- Warm gloves, scarf
- Gaiters recommended
- (head-) torch
- Walking poles
- (insulated) water bottles (min. 3 litres total capacity). “Camel bags” are not recommended for the summit stage as they tend to freeze and block)
- Waterproof luggage cover
- First aid / medical kit
- Sun hat / sun glasses (UV proof) / sun screen, (grade 30-50)
- Energy snacks: Power Gel, Muesli bars, chocolate etc....
- Copies of all important travel documents (Passport, tickets, insurance, etc.)
- Money belt
- Wet wipes
- Scissors / nail clipper / nail brush
- Spare camera batteries and solar charger
- Ear plugs (snoring fellow climbers etc....)

Africa Travel Bureau Policies

Reservations.

All reservations, as well as requests for itinerary planning and quotations should be addressed to **Africa Travel Bureau Limited (ATB)**, PO Box 1440, Arusha, Tanzania, Telephone +255 (0) 713 625 788, e-mail address info@africatravelbureau.co.tz. Upon receipt of a booking request, **ATB** shall issue a Confirmation Advice as well as an invoice.

Payment.

A deposit of 10% of the total tour price is required at the time of booking, with the balance due 45 days before tour services commence. For bookings later than 30 days prior to arrival, payment is due immediately. In case a tailor-made itinerary includes accommodation other than the ones indicated in the standard safari itineraries, ATB reserves the right to amend the payment schedule or to request a deposit payment depending on the terms and conditions of the lodge/camp booked. No services will be performed unless full payment has been received. Payments should be made by bank telegraphic transfer to our account.

Prices.

Provided that after the deposit for the tour price has been paid by the due date, ATB shall be bound unconditionally to the tour price agreed from that time unless the tour price shall be affected by any factor beyond the control of ATB, in which case ATB reserves the right to adjust the price accordingly.

Cancellation Terms and Penalties.

1. Notification of cancellation must be given to **ATB** in writing.
2. If cancellation notification is received by **ATB** 91 days or more in advance of arrival in Tanzania, a cancellation fee of 10% of the total tour price will be charged.
3. If cancellation notification is received by **ATB** between 90 days and 46 days in advance of arrival in Tanzania, a cancellation fee of 25% of the total tour price will be charged.
4. If cancellation notification is received by **ATB** between 45 days and 30 days in advance of arrival in Tanzania, a cancellation fee of 50% of the total tour price will be charged.
5. If cancellation notification is received by **ATB** within 30 days in advance of arrival in Tanzania, a cancellation fee of 90% of the total tour price will be charged.

6. Should the date of travel of an existing booking be amended within 30 days of travel, the booking must travel within 6 months of the original travel date to avoid cancellation fees. Should the amended booking be cancelled at any stage, 90% cancellation penalties will apply.

Provisional Reservations.

Provisional reservations (by e-mail only) will be held as follows:

Up to 121 days prior to arrival – 14 days with automatic release

120 – 61 days prior to arrival – 7 days with automatic release

From 60 days prior to arrival – 3 days with automatic release

Alterations to Tours.

The right is reserved to change any route or arrangements should conditions so necessitate, to offer substitutes of equal value, or to cancel the operation of any scheduled tour. The right is also reserved to decline to accept or retain any person as a member of any tour at any time, in which event an equitable amount will be refunded.

Un-used portion of safari tour or services.

ATB does not refund for any un-used portion of safari tour or services.

Limit of Liability.

ATB is a Limited Liability Company and operating under the laws of the United Republic of Tanzania. **ATB** operates only to make travel arrangements with carriers, hotels and other suppliers, which are independent contractors, and in no way represents, warrants or guarantees their performance. As independent contractors, none of the above are agents, employees, or servants of or joint ventures of **ATB**. All certificates and other travel documents for tour services issued by **ATB** are subject to the terms and conditions specified by the supplier and the laws of the countries which the services are supplied.

As such **ATB**:

1. Does not have the right to control the operations of the above-mentioned entities;
2. Does not have the right to set the prices charged by the above entities;
3. Cannot control certain cancellation restrictions and penalties imposed by the above-mentioned entities;
4. Cannot be responsible for any airline cancellation penalty incurred by the purchase of a non-refundable ticket;

5. Cannot be responsible for any damage, loss, accident, injury, delay or other irregularity which may be caused by any vehicle or negligence or default or any company or person engaged in carrying out or performing any of the services involved;
6. Cannot be responsible for severe injury or death due to participation in certain travels which have inherent risks, but not limited to, attacks by wild animals, hot air ballooning, sightseeing flights in small planes, mountain climbing and rafting;
7. Cannot be responsible for losses or expenses from sickness, quarantine, weather, Acts of God, strikes, civil disturbances, wars, customs regulations, or such other causes.

Any losses sustained due to the above must be borne solely by the Participant. All baggage and personal effects are solely the responsibility of the owners of such baggage and personal effects at all times.

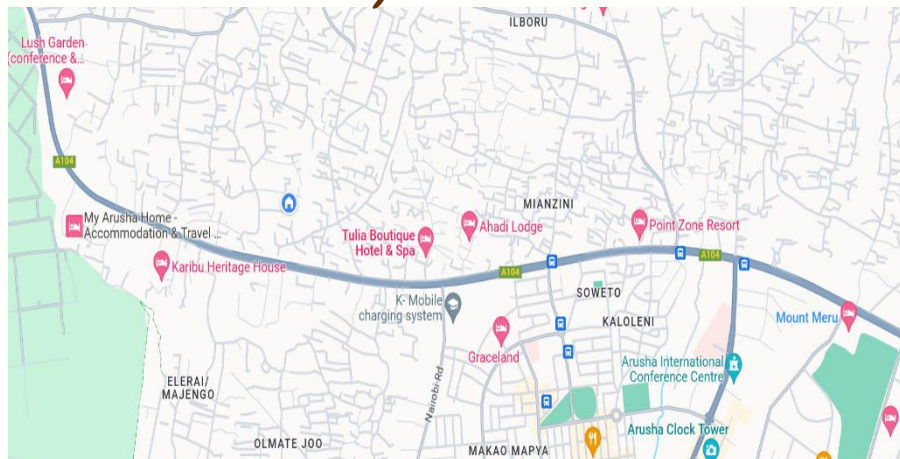
ATB Personal Information and Data Protection Policy.

1. Storage of your / or your clients' personal information and data will be done exclusively for the fulfillment and processing of the arranged touristic services, considering information and data protection.
2. Uses made of the personal information and data received from you / or your clients' on to any third parties not being involved in the fulfillment and processing of the arranged touristic services.
3. **ATB** guarantees that the persons authorized to process the personal information and data have committed themselves to confidentiality.

Insurance.

ATB strongly advises Participants to purchase travel protection insurance. Due to unexpected events, illness, and emergencies, Participants risk losing all or part of their travel investment. In the absence of travel protection insurance, Participants are not covered for any losses sustained in addition to tour costs, such as medical expenses, baggage loss, death benefits. There are a number of policies available, varying in the extent and type of coverage, as well as the cost. Typically, the policies do not cover losses incurred due to civil disturbances, war, terrorism, or insolvency of tour operator.

Contacts and Physical Address



AFRICA TRAVEL BUREAU
House 05:EL/KW 182,
Police Street,
Azimio along Nairobi-Moshi Road,
PO Box 1440, Arusha, Tanzania
Telephone: +255 (0) 713 625 788,
+255 (0) 659 777 773

info@africatravelbureau.co.tz | www.africatravelbureau.co.tz



africa[®] travel Bureau

Tanzania & Zanzibar

www.africatravelbureau.co.tz

info@africatravelbureau.co.tz